



**ALABAMA STATE
UNIVERSITY**

Office of Institutional Research



Your official reference guide to ASU

The 2012 Fact Book

Preface

The Office of Institutional Research (OIR) at Alabama State University publishes the University Fact Book annually during the spring semester. This document serves as an official reference guide to pertinent information about the University's history, facilities, students, personnel, alumni and academic programs. The Fact Book presents information that highlights the patterns or trends that exist in the institutional data. The Fact Book also provides a historical context in which to review the University's development and may be used as a reference among the University's administrators and faculty in planning and decision-making.

Table of Contents

| | | | |
|---|----------|--|----|
| Fall 2012 Quick Facts | 2 | List of Figures | |
| General Information | | Figure 1 | |
| Mission Statement | 3 | Alabama State University Organizational Chart | 8 |
| Institutional Goals | 3 | Figure 2 | |
| Accreditations and Memberships | 4 | Total Enrollment by Colleges, Fall 2012 | 15 |
| Affiliations | 5 | Figure 3 | |
| Administration and Organization | | Total Fall Enrollment FTE and 12-Month Unduplicated Head Count, 2007-12 | 33 |
| Board of Trustees | 6 | Figure 4 | |
| Executive Officers | 7 | Number of First-Time, First-Year (Freshmen) Applicants, Admitted and Enrolled, Fall 2008-Fall 2012 | 42 |
| Organizational Chart | 8 | Figure 5 | |
| ASU Presidents | 9 | Number of Transfer Student Applicants, Admitted and Enrolled, Fall 2008-12 | 43 |
| Deans and Directors (Academic Affairs) | 10 | Figure 6 | |
| Academic Degree Program Inventory | 11 | Number of Graduate Applicants, Admitted and Enrolled, Fall 2008-12 | 44 |
| Student Information | | Figure 7 | |
| Enrollment | 15 | Degrees Conferred by Degree Level, Fall 2011-Summer 2012 | 45 |
| New Students | 37 | Figure 8 | |
| Admission | 42 | Degrees Conferred by Degree Level, 2007-08 through 2011-12 | 46 |
| Graduation Information | | Figure 9 | |
| Degrees Conferred | 45 | Four-Year, Six-Year and Eight-Year Graduation Rates for First-Time, Full-Time Undergraduates, Entering Cohorts 2002-08 | 52 |
| Retention and Graduation Rates | 52 | Figure 10 | |
| Employee Information | 54 | First-Year, Second-Year and Fourth-Year Retention Rates for First-Time, Full-Time Undergraduates, Entering Cohorts 2005-11 | 53 |
| Physical Facilities | | Figure 11 | |
| Building Inventory, Fall 2011 | 59 | University Employees by Occupational Classifications | 55 |
| Space Data, Fall 2007-2011 | 63 | Figure 12 | |
| Financial Information | | Highest Degrees Earned by Full-Time Faculty, Oct. 31, 2012 | 58 |
| Source of Revenue, Fiscal Year 2011-12 | 64 | | |
| Expenditures by Function, Fiscal Year 2011-12 | 64 | | |
| Alabama State University Tuition and Fees as Compared to State Median, 2007-12 | 65 | | |
| Glossary | 66 | | |
| Alumni Information | 71 | | |

Quick Facts

Fall 2012 Enrollment: 5,816

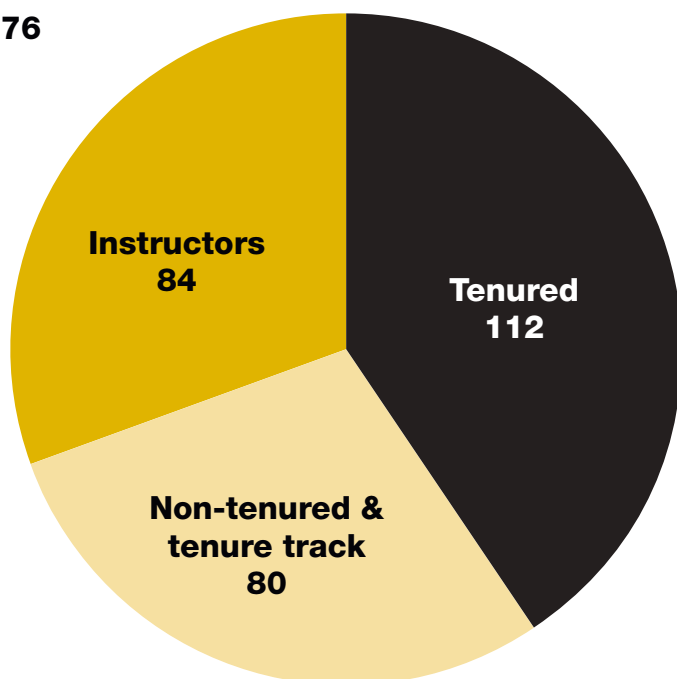
University Operating Budget: \$184,290,226

Degrees Awarded 2011-12

| Degree type | Female | Male | Total |
|-------------|--------|------|-------|
| Bachelors | 351 | 210 | 561 |
| Masters | 134 | 45 | 179 |
| Doctoral | 33 | 12 | 45 |
| Specialist | 24 | 6 | 30 |

Instructional Faculty 2012

Total: 276



Demographics

| | |
|------------------|-------|
| Full-time | 4,966 |
| Part-time | 850 |

| | |
|---------------|-------|
| Male | 3,540 |
| Female | 2,276 |

| | |
|---------------------|-------|
| Instate | 4,214 |
| Out-of-State | 1,602 |

| | |
|--------------|-------|
| Black | 5,422 |
|--------------|-------|

| | |
|-----------------------------|-----|
| White (Non-Hispanic) | 167 |
|-----------------------------|-----|

| | |
|-----------------|----|
| Hispanic | 59 |
|-----------------|----|

| | |
|--------------|---|
| Asian | 7 |
|--------------|---|

| | |
|---|---|
| American Indian or Alaska Native | 6 |
|---|---|

| | |
|--|---|
| Native Hawaiian or Other Pacific Islander | 3 |
|--|---|

| | |
|---------------------------|----|
| Non-resident Alien | 49 |
|---------------------------|----|

| | |
|--------------------|----|
| Two or More | 21 |
|--------------------|----|

| | |
|----------------|----|
| Unknown | 82 |
|----------------|----|

| | |
|----------------------|-------|
| Undergraduate | 5,130 |
|----------------------|-------|

| | |
|----------|-------|
| Freshmen | 2,484 |
|----------|-------|

| | |
|------------|-----|
| Sophomores | 952 |
|------------|-----|

| | |
|---------|-----|
| Juniors | 744 |
|---------|-----|

| | |
|---------|-----|
| Seniors | 950 |
|---------|-----|

| | |
|-----------------|-----|
| Graduate | 686 |
|-----------------|-----|

| | |
|---------|-----|
| Masters | 419 |
|---------|-----|

| | |
|------------------------|----|
| Educational Specialist | 73 |
|------------------------|----|

| | |
|----------|-----|
| Doctoral | 160 |
|----------|-----|

| | |
|--------------|----|
| Unclassified | 34 |
|--------------|----|

General Information

Mission

Alabama State University is a student-centered, nurturing, comprehensive and diverse public historically black University committed to achieving excellence in teaching, research and public service. The University fulfills its mission through fostering critical thought, artistic creativity, professional competence and responsible citizenship in its students; by adding to the body of knowledge to enhance the quality of life through research and discovery; and by helping to advance the state and nation through thoughtful public service. Offering baccalaureate through doctorate degrees, the University maintains a scholarly and creative faculty, state-of-the-art facilities and a living atmosphere in which all members of the campus community can work and learn in pleasant and rewarding surroundings. Consistent with its assurance that race, gender nor economic status inhibits intelligence, creativity or achievement, ASU offers a bridge to success for those who commit to pursuing the building blocks of development, focus, persistence and reward.

Institutional Goals

1. To organize the University in such a manner as to provide sufficient and appropriate leadership, management and oversight to achieve its mission and goals;
2. To ensure the academic integrity of the University;
3. To ensure the fiscal integrity of the University;
4. To enhance the public's perception of the University in order to increase external support;
5. To develop and maintain the physical campus so that the University is a productive, pleasant place to work, study and live;
6. To ensure that the University responds to all of its constituents;
7. To improve programs and services that will contribute to the development of wholesome student life; and
8. To foster continuous improvement of daily operations to become a world-class institution of higher learning.

Accreditations and Memberships

Alabama State University (ASU) is accredited by the Southern Association of Colleges and Schools Commission on Colleges (SACS COC) to award bachelor's, master's, education specialist and doctoral degrees.

University Departmental Programs are accredited by the following organizations and associations:

- » Accreditation Council for Occupational Therapy Education (ACOTE)
- » Commission on Accreditation for Health Informatics and Information Management Education (CAHIIM)
- » Commission on Accreditation in Physical Therapy Education (CAPTE)
- » Commission on Undergraduate Standards and Accreditation (CUSA)
- » Council for Accreditation of Counseling & Related Educational Programs (CACREP)
- » Council on Rehabilitation Education (CORE)
- » Council on Social Work Education (CSWE)
- » National Association of Schools of Art and Design (NASAD)
- » National Association of Schools of Music (NASM)
- » National Association of Schools of Theatre (NAST)
- » National Commission on Orthotic and Prosthetic Education (NCOPE)
- » National Council for Accreditation of Teacher Education (NCATE)
- » The Accreditation Council for Business Schools and Programs (ACBSP)

ASU is approved by the Alabama State Department of Education and its programs and credits are accepted for teacher certification.

In addition, ASU is approved by the Veterans Administration to provide educational programs authorized by Congress under several federal acts and those authorized by the state of Alabama under the Alabama G.I. and Dependents Benefit Act.

Affiliations

ASU holds membership in a large number of organizations, including the following:

- » Alabama Association for Higher Education in Business
- » Alabama Association of College Administrators
- » American Assembly of Collegiate Schools of Business
- » American Association of Collegiate Registrars and Admissions Officers
- » American Association of Colleges for Teacher Education
- » American Association of State Colleges and Universities
- » American Association of University Women
- » American Council on Education
- » American Library Association
- » Association of Governing Boards of Universities and Colleges
- » College Language Association
- » Conference of Southern Graduate Schools
- » Council for Advancement and Support of Education
- » Council of Graduate Schools
- » National Association for Equal Opportunity in Higher Education
- » National Association of Intercollegiate Athletics
- » National Association of Student Personnel Administrators
- » National Broadcasters Association
- » National Collegiate Athletic Association
- » Southwestern Athletic Conference

ASU is on the approved list of the American Association of University Women. Women graduates with approved baccalaureate degrees are eligible for membership in that association.

Alabama State University is authorized under federal law to enroll non-immigrant alien students-ACT 101 (a) (15) (F): CFR 214.3.

Authorization location of more than 20 chapters of national honor and professional societies on the campus further attest to the high standing of the University and recognition of the quality of its academic programs and offerings.

Administration and Organization

Board of Trustees 2012-13

| Officers | District | Term Expires January 31 |
|--|-----------------|--------------------------------------|
| Governor Robert Bentley | | 2014 |
| Elton N. Dean, Sr., ** Montgomery | State-at-Large | 2023 |
| Marvin Wiggins, ** Greensboro | Seventh | 2017 |
| William H., Harris, Montgomery | Secretary | |
| Members | District | Term Expires January 31** |
| Locy Baker, Abbeville | Second | 2023 |
| Jacqueline R. Austin Brooks, Tuskegee | Third | 2014 |
| Buford Crutcher, Huntsville | Fifth | 2020 |
| Thomas H. Figures, ** Mobile | State-at-Large | 2014 |
| Robert E. Gilpin, Montgomery | Second | 2020 |
| Alfreda Green, Huntsville | State-at-Large | 2020 |
| Taylor Hodge, Jr., Mobile | First | 2017 |
| Bobby M. Junkins, Gadsden | Fourth | 2023 |
| Larry Thornton | State-at-Large | 2014 |
| Herbert Young, ** Hoover | Sixth | 2017 |

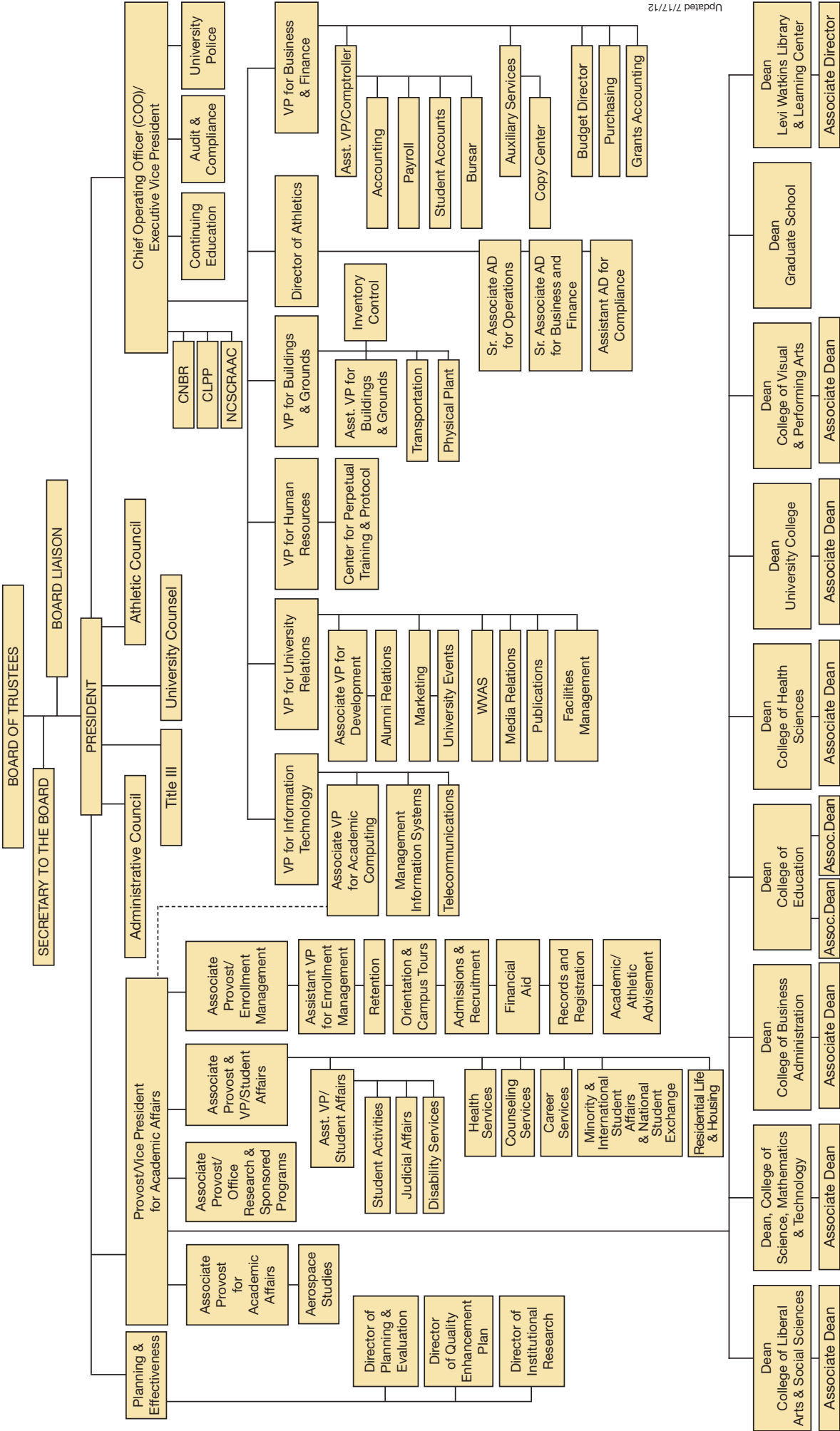
**Denotes Trustees who are alumni of the University.

Trustees may serve until their successors are appointed but not more than 12 years.

Administrative Officers Fall 2012

| | |
|-----------------------------|---|
| Dr. William H. Harris | Interim President |
| Dr. John F. Knight Jr. | Executive Vice President and Chief Operating Officer |
| Dr. Bernadette Chapple | Associate Executive Vice President |
| Dr. Leon C. Wilson | Interim Provost and Vice President for Academic Affairs |
| Dr. Sharron Herron-Williams | Interim Associate Provost for Academic Affairs |
| Carmen Douglas | Vice President for Human Resources |
| Freddie Gallot Jr. | Vice President for Business and Finance |
| Melvin Hines | Acting Director of Intercollegiate Athletics |
| Danielle M. Kennedy | Vice President for University Relations |
| Brian E. Thornton | Interim Vice President for Buildings and Grounds |
| Dr. William P. Hytche | Associate Provost and Vice President for Student Affairs |
| Cherise Peters | Associate Provost and Vice President for Enrollment Management |

Figure 1. Alabama State University Organizational Chart



ASU Presidents

George N. Card

1874-1878

William Burns Paterson

1878-1915

John William Beverly

1915-1920

George Washington Trenholm

1920-1925

Harper Councill Trenholm

1925-1962

Robert C. Hatch

(Interim President-Jan. 1962-Sept. 1962)

1962-1962

Levi Watkins

1962-1981

Robert Lee Randolph

1981-1983

Leon Howard

1984-1991

(Interim President-Nov. 1983-August 1984)

C. C. Baker

1991-1994

William H. Harris

1994-2000

Roosevelt Steptoe

2000-2001

(Interim President- Oct. 2000-Sept. 2001)

Joe A. Lee

2001-2008

William H. Harris

2008-2012

Joseph H. Silver Sr.

2012-2012

William H. Harris

2013-Present

(Interim President-Jan. 2013-Present)



Deans and Directors (Academic Affairs) Fall 2012

| | |
|-------------------------|--|
| Dr. Anthony Troy Adams | Interim Dean, College of Liberal Arts and Social Sciences |
| Dr. Le-Quita Booth | Dean, College of Business Administration |
| Dr. Charlie Gibbons | Interim Dean, College of Education |
| Dr. Steven B. Chesbro | Dean, College of Health Sciences |
| Dr. Cajetan Akujuobi | Dean, College of Science, Mathematics and Technology |
| Dr. Tommie H. Stewart | Dean, College of Visual and Performing Arts |
| Dr. Evelyn A. Hodge | Dean, University College |
| Dr. William A. Person | Dean, Graduate School |
| Dr. Janice R. Franklin | Dean, Levi Watkins Learning Center |
| Dr. Christine C. Thomas | Director, Office of Academic Planning and Evaluation |
| Dr. Yiyun Jie | Director, Office of Institutional Research |
| Dr. Tanjula Petty | Director, Quality Enhancement Plan |
| Dr. Ronald Brown | Assistant Vice President, Academic Advisement and Support Services |

Academic Degree Program Inventory

| CIP | Field Of Study | Program Title | Degrees Offered |
|--|---|--|-----------------|
| College of Liberal Arts & Social Sciences | | | |
| 09.0101 | Speech Communication and Rhetoric | Communications | B.A. |
| 23.0101 | English Language and Literature, General | English | B.A. |
| 43.0104 | Criminal Justice/ Safety Studies | Criminal Justice Studies | B.S. |
| 44.0701 | Social Work | Social Work | B.S.W. |
| 45.1001 | Political Science and Government, General | Political Science and Government | B.A. |
| 54.0101 | History, General | History | B.A. |
| College of Business Administration | | | |
| 11.0401 | Information Science/Studies | Computer Information Systems | B.S. |
| 52.0201 | Business Administration and Management, General | Business Management and Administration | B.S. |
| 52.0301 | Accounting | Accounting | B.S. |
| 52.0801 | Finance, General | Banking and Finance | B.S. |
| 52.1401 | Marketing/ Marketing Management, General | Marketing and Purchasing | B.S. |
| 52.0301 | Accounting | Accountancy | M.Acc. |
| College of Education | | | |
| 13.1001 | Special Education and Teaching, General | Special Education (Mr) | B.S. |
| 13.1202 | Elementary Education and Teaching | Elementary Education | B.S. |

Academic Degree Program Inventory (continued)

| CIP | Field Of Study | Program Title | Degrees Offered |
|---|--|--------------------------------------|-----------------|
| College of Education (continued) | | | |
| 13.1205 | Secondary Education and Teaching | Secondary Education | B.S. |
| 13.1210 | Early Childhood Education and Teaching | Pre-Elementary Education | B.S. |
| 13.1312 | Music Teacher Education | Music Education | B.M.Ed. |
| 13.1314 | Physical Education Teaching and Coaching | Physical Education | B.S. |
| 31.0301 | Parks, Recreation and Leisure Facilities Management, General | Parks and Recreation Management | B.S. |
| 42.0101 | Psychology, General | Psychology | B.S. |
| 13.0401 | Educational Leadership and Administration, General | Educational Administration | M.Ed. |
| 13.0501 | Educational/ Instructional Technology | Library Educational Media | M.Ed. |
| 13.1001 | Special Education and Teaching, General | Special Education (Mr, Ld) | M.Ed. |
| 13.1101 | Counselor Education/School Counseling and Guidance Services | Guidance Counseling | M.Ed. |
| 13.1205 | Secondary Education and Teaching | Pre-Elementary/ Elementary Education | M.Ed. |
| 13.1210 | Early Childhood Education and Teaching | Pre-Elementary/ Elementary Education | M.Ed. |
| 13.1206 | Teacher Education, Multiple Levels | P-12 Education | M.Ed. |

Academic Degree Program Inventory (continued)

| CIP | Field Of Study | Program Title | Degrees Offered |
|---|--|--|-----------------|
| College of Education (continued) | | | |
| 11.1099 | Computer/ Information Technology Services Administration and Management Applied Technology | Applied Technology | M.S. |
| 44.9999 | Public Administration and Social Service Professions, Other | Agency Counseling | M.S. |
| 13.0401 | Educational Leadership and Administration, General | Educational Leadership, Policy and Law | Ed.D. |
| 13.0401 | Educational Leadership and Administration, General | Educational Leadership, Policy and Law | Ph.D. |
| 13.0101 | Education, General | Education | Ed.S. |
| 13.1101 | Counselor Education/School Counseling and Guidance Services | Counseling | Ed.S. |
| College of Health Sciences | | | |
| 51.0706 | Health Information/ Medical Records Administration/ Administrator | Health Information Management | B.S. |
| 51.2399 | Rehabilitation and Therapeutic Professions, Other | Rehabilitation Services | B.S. |
| 51.2307 | Orthotist/Prosthetist | Prosthetics and Orthotics | M.S. |
| 51.2306 | Occupational Therapy/Therapist | Occupational Therapy | M.S.O.T |
| 51.2308 | Physical Therapy/ Therapist | Physical Therapy | D.P.T. |
| 51.2310 | Vocational Rehabilitation | Rehabilitation Counseling | M.R.C. |

Academic Degree Program Inventory (continued)

| CIP | Field Of Study | Program Title | Degrees Offered |
|---|--|--------------------|-----------------|
| College of Science, Mathematics & Technology | | | |
| 11.0701 | Computer Science | Computer Science | B.S. |
| 26.0101 | Biology/Biological Sciences, General | Biology | B.S. |
| 26.0101 | Biology/Biological Sciences, General | Biology | M.S. |
| 26.0502 | Microbiology, General | Microbiology | Ph.D. |
| 26.1302 | Marine Biology And Biological Oceanography | Marine Biology | B.S. |
| 27.0101 | Mathematics, General | Mathematics | B.S. |
| 27.0101 | Mathematics, General | Mathematics | M.S. |
| 40.0501 | Chemistry, General | Chemistry | B.S. |
| 40.0510 | Forensic Chemistry | Forensic Chemistry | B.S. |
| 40.0801 | Physics, General | Physics | B.S. |
| 43.0106 | Forensic Science And Technology | Forensic Science | M.S. |
| College of Visual & Performing Arts | | | |
| 50.0301 | Dance, General | Dance | B.F.A. |
| 50.0501 | Drama And Dramatics/Theatre Arts, General | Theatre Arts | B.A. |
| 50.0701 | Art/Art Studies, General | Art | B.A. |
| 50.0901 | Music, General | Music | B.A. |

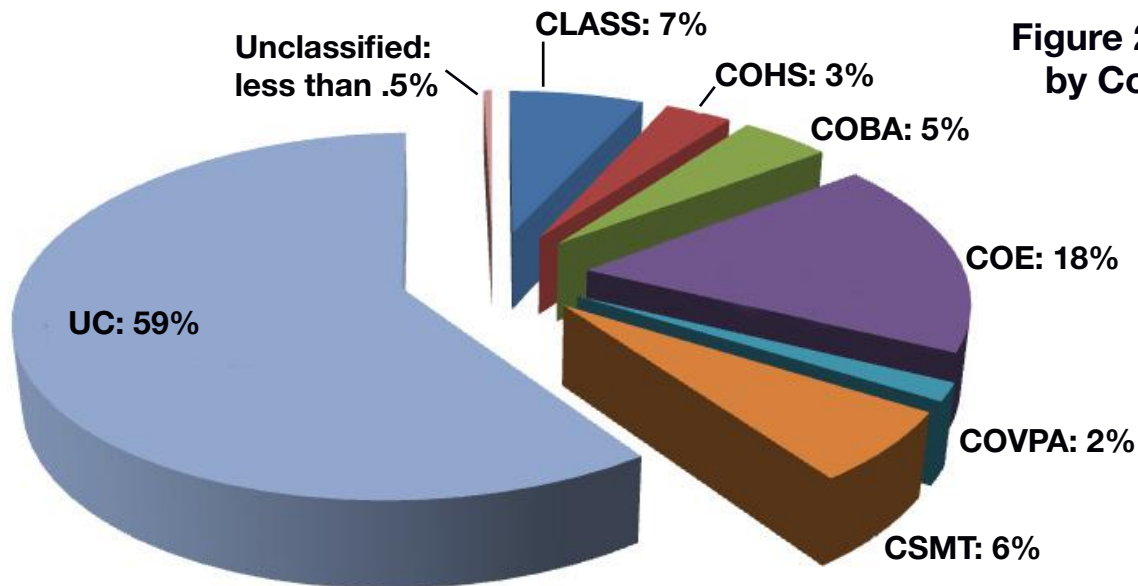
Total Number of Degree Programs

| | |
|----------------|-----------|
| Associate | 0 |
| Baccalaureates | 32 |
| Masters | 16 |
| EDS | 2 |
| Doctoral | 4 |
| Total | 54 |

Student Information

Enrollment

Figure 2. Total Enrollment by Colleges, Fall 2012



Enrollment by College, Academic Level and Full-Time/Part-Time Status, Fall 2012

| Academic College | Undergraduates | | | Graduates | | | Total |
|---|----------------|------------|--------------|------------|------------|------------|--------------|
| | Full-Time | Part-Time | Total | Full-Time | Part-Time | Total | |
| College of Liberal Arts & Social Sciences (CLASS) | 334 | 55 | 389 | 2 | 3 | 5 | 394 |
| College of Health Sciences (COHS) | 35 | 2 | 37 | 144 | 15 | 159 | 196 |
| College of Business Administration (COBA) | 207 | 41 | 248 | 9 | 8 | 17 | 265 |
| College of Education (COE) | 498 | 72 | 570 | 113 | 342 | 455 | 1,025 |
| College of Visual and Performing Arts (CVPA) | 85 | 8 | 93 | | | | 93 |
| College of Science, Mathematics & Technology (CSMT) | 304 | 30 | 334 | 13 | 20 | 33 | 367 |
| University College (UC) | 3,220 | 232 | 3,452 | | | | 3,452 |
| Unclassified* | | 7 | 7 | 2 | 15 | 17 | 24 |
| Total | 4,683 | 447 | 5,130 | 283 | 403 | 686 | 5,816 |

*Note: Unclassified includes Non-degree seeking students and undecided students at the graduate level.

**Full-Time Equivalent (FTE) by In-State/Out-of-State
Status and Academic Level, Fall 2012**

| Full-Time Equivalent | Undergraduates | Graduates | Total |
|-----------------------------|-----------------------|------------------|--------------|
| In-state | 3,558 | 458 | 4,016 |
| Out-of-state | 1,498 | 61 | 1,559 |
| Total | 5,056 | 519 | 5,575 |

Enrollment by Gender, Ethnicity and Academic Level, Fall 2012

| Gender & Ethnicity | | Undergrad | Grad | Total |
|----------------------------------|---|------------------|-------------|--------------|
| Male | American Indian or Alaska Native | 2 | 1 | 3 |
| | Asian | 0 | 1 | 3 |
| | Black or African American | 1,965 | 148 | 2,113 |
| | Native Hawaiian or Other Pacific Islander | 0 | 0 | 0 |
| | Hispanic/Latino | 30 | 2 | 32 |
| | Non-resident alien/International | 20 | 2 | 22 |
| | Other | 2 | 3 | 5 |
| | Two or more | 8 | 1 | 9 |
| | White non-Hispanic | 21 | 42 | 63 |
| | Unknown | 28 | 0 | 28 |
| Subtotal (Male) | | 2,076 | 200 | 2,276 |
| Female | American Indian or Alaska Native | 1 | 2 | 3 |
| | Asian | 3 | 3 | 6 |
| | Black or African American | 2,905 | 404 | 3,309 |
| | Native Hawaiian or Other Pacific Islander | 3 | 0 | 3 |
| | Hispanic/Latino | 22 | 5 | 27 |
| | Non-resident alien/International | 21 | 6 | 27 |
| | Other | 10 | 0 | 10 |
| | Two or more | 11 | 1 | 12 |
| | White non-Hispanic | 40 | 64 | 104 |
| | Unknown | 38 | 1 | 39 |
| Subtotal (Female) | | 3,054 | 486 | 3,540 |
| Total (Male & Female) | | 5,130 | 686 | 5,816 |

Enrollment by College, Gender and Classification, Fall 2012

| College | | Fresh. | Soph. | Jr. | Sr. | Ugrad. Total | Ma.* | Spec. | Doc. | Uncl. | Grad Total |
|--|-----------------|--------------|------------|------------|------------|--------------|------------|-----------|------------|-----------|------------|
| College of Liberal Arts & Social Sciences | F | 15 | 34 | 62 | 119 | 230 | 4 | | | | 4 |
| | M | 12 | 33 | 45 | 69 | 159 | 1 | | | | 1 |
| | Subtotal | 27 | 67 | 107 | 188 | 389 | 5 | | | | 5 |
| College of Health Sciences | F | 10 | 3 | 5 | 11 | 29 | 62 | | 41 | | 103 |
| | M | 3 | 1 | 2 | 2 | 8 | 24 | | 32 | | 56 |
| | Subtotal | 13 | 4 | 7 | 13 | 37 | 86 | | 73 | | 159 |
| College of Business Administration | F | 2 | 17 | 34 | 57 | 110 | 11 | | | | 11 |
| | M | 9 | 17 | 46 | 66 | 138 | 6 | | | | 6 |
| | Subtotal | 11 | 34 | 80 | 123 | 248 | 17 | | | | 17 |
| College of Education | F | 15 | 50 | 106 | 190 | 361 | 228 | 65 | 45 | | 338 |
| | M | 20 | 39 | 49 | 101 | 209 | 81 | 8 | 28 | | 117 |
| | Subtotal | 35 | 89 | 155 | 291 | 570 | 309 | 73 | 73 | | 455 |
| College of Visual & Performing Arts | F | 2 | 15 | 11 | 22 | 50 | | | | | |
| | M | 6 | 5 | 20 | 12 | 43 | | | | | |
| | Subtotal | 8 | 20 | 31 | 34 | 93 | | | | | |
| College of Science, Mathematics & Technology | F | 17 | 49 | 55 | 112 | 233 | 14 | | 6 | | 20 |
| | M | 9 | 21 | 29 | 42 | 101 | 5 | | 8 | | 13 |
| | Subtotal | 26 | 70 | 84 | 154 | 334 | 19 | | 14 | | 33 |
| University College | F | 1,374 | 394 | 174 | 95 | 2,037 | | | | | |
| | M | 986 | 273 | 106 | 50 | 1,415 | | | | | |
| | Subtotal | 2,360 | 667 | 280 | 145 | 3,452 | | | | | |
| Unclassified* | F | 2 | | 2 | 4 | | | | | 10 | 10 |
| | M | 2 | 1 | | 3 | | | | | 7 | 7 |
| | Subtotal | 4 | 1 | 2 | 7 | | | | | 17 | 17 |
| Total Class | | 2,484 | 952 | 744 | 950 | 5,130 | 436 | 73 | 160 | 17 | 686 |

*Note: Alt-A students are included in Master's.

Unclassified includes non-degree seeking students at the undergraduate level and undecided students at the graduate level.

Enrollment by College, Major and Classification, Fall 2012

| | Freshmen | Sophomores | Juniors | Seniors | Graduates | Total |
|--|-----------|------------|------------|------------|------------|------------|
| College of Liberal Arts & Social Sciences | | | | | | |
| Communication | 7 | 20 | 35 | 47 | | 109 |
| Criminal Justice | 11 | 33 | 45 | 66 | | 155 |
| English | | 1 | 1 | 12 | | 14 |
| History | 1 | | 2 | 5 | 5 | 13 |
| Political Science | 4 | 5 | 3 | 12 | | 24 |
| Social Work | 4 | 8 | 21 | 45 | | 78 |
| Sociology | | | | 1 | | 1 |
| Subtotal | 27 | 67 | 107 | 188 | 5 | 394 |
| College of Health Sciences | | | | | | |
| Health Information Management | 13 | 4 | 7 | 13 | | 37 |
| Occupational Therapy | | | | | 50 | 50 |
| Physical Therapy | | | | | 73 | 73 |
| Prosthetics & Orthotics | | | | | 4 | 4 |
| Rehabilitation Counseling | | | | | 32 | 32 |
| Rehabilitation Services | 3 | 8 | 15 | 32 | | 58 |
| Subtotal | 16 | 12 | 22 | 45 | 159 | 254 |
| College of Business Administration | | | | | | |
| Accounting | 1 | 2 | 18 | 26 | 17 | 64 |
| Computer Information Systems | 4 | 12 | 23 | 29 | | 68 |
| Finance | | 2 | 5 | 9 | | 16 |
| Management | 3 | 12 | 24 | 44 | | 83 |
| Marketing | 3 | 6 | 10 | 15 | | 34 |
| Subtotal | 11 | 34 | 80 | 123 | 17 | 265 |
| College of Education | | | | | | |
| Administration | | | | | 3 | 3 |
| Applied Technology | | | | | 11 | 11 |
| Biology Education | | | | | 16 | 16 |
| Collaborative Education | | 3 | 5 | 12 | 21 | 41 |
| Clinical & Mental Health Counseling | | | | | 78 | 78 |

Enrollment by College, Major and Classification, Fall 2012 (continued)

| | Freshmen | Sophomores | Juniors | Seniors | Graduates | Total |
|---|-----------|------------|------------|------------|------------|------------|
| College of Education (continued) | | | | | | |
| Early Childhood Education | 3 | 12 | 13 | 22 | 25 | 75 |
| Elementary Education | 2 | 13 | 26 | 56 | 76 | 173 |
| English Education | | | | | 17 | 17 |
| Health Education | 1 | 2 | 5 | 3 | 5 | 16 |
| History Education | | | | | 5 | 5 |
| Instructional Leadership Program | | | | | 32 | 32 |
| Leadership, Policy & Law | | | | | 73 | 73 |
| Library Education Media | | | | | 12 | 12 |
| Math Education | | | | | 22 | 22 |
| Music Education | 1 | 2 | 4 | 17 | 11 | 35 |
| Physical Education | 6 | 11 | 12 | 45 | 10 | 84 |
| Psychology | 7 | 14 | 35 | 34 | | 90 |
| Reading/Reading Specialist | | | | | 5 | 5 |
| Recreation | 6 | 12 | 14 | 24 | | 56 |
| School Counseling | | | | | 21 | 21 |
| Social Science Education | | | | | 12 | 12 |
| Secondary Biology | | 1 | 3 | 3 | | 7 |
| Secondary English | 2 | 2 | 7 | 18 | | 29 |
| Secondary General Science | | | 2 | 1 | | 3 |
| Secondary History | 1 | 4 | 3 | 4 | | 12 |
| Secondary Mathematics | 1 | 2 | 5 | 7 | | 15 |
| Secondary Marketing | 1 | 3 | 4 | 8 | | 16 |
| Secondary Social Science Education | | | 1 | 4 | | 5 |
| Secondary Education (General) | 1 | | 1 | 1 | | 3 |
| Subtotal | 32 | 81 | 140 | 259 | 455 | 967 |

Enrollment by College, Major and Classification, Fall 2012 (continued)

| | Freshmen | Sophomores | Juniors | Seniors | Graduates | Total |
|---|-----------|------------|-----------|------------|-----------|------------|
| College of Visual & Performing Arts | | | | | | |
| Art | 5 | 7 | 4 | 6 | | 22 |
| Music | 1 | 4 | 9 | 6 | | 20 |
| Theatre | 2 | 9 | 18 | 22 | | 51 |
| Subtotal | 8 | 20 | 31 | 34 | | 93 |
| College of Science, Mathematics & Technology | | | | | | |
| Biology | 13 | 38 | 50 | 105 | 14 | 220 |
| Chemistry | 4 | 17 | 18 | 14 | | 53 |
| Computer Science | 4 | 2 | 8 | 12 | | 26 |
| Forensic Science | 2 | 5 | 3 | 3 | 8 | 21 |
| Mathematics | 3 | 8 | 5 | 20 | 1 | 37 |
| Microbiology | | | | | 10 | 10 |
| Subtotal | 26 | 70 | 84 | 154 | 33 | 367 |
| University College | | | | | | |
| Accounting | 46 | 21 | 4 | 2 | | 73 |
| Art | 22 | 10 | 3 | 3 | | 38 |
| Biology | 150 | 58 | 15 | 8 | | 231 |
| Communication | 96 | 47 | 17 | 7 | | 167 |
| Chemistry | 37 | 20 | 3 | 4 | | 64 |
| Computer Information Systems | 49 | 25 | 5 | 2 | | 81 |
| Criminal Justice | 214 | 38 | 22 | 12 | | 286 |
| Computer Science | 57 | 11 | 5 | 2 | | 75 |
| Early Childhood Education | 60 | 17 | 7 | 4 | | 88 |
| Elementary Education | 72 | 26 | 12 | 9 | | 119 |
| Engineering | 26 | 8 | 1 | | | 35 |
| English | 13 | 2 | 4 | 1 | | 23 |
| Finance | 10 | 7 | 5 | 2 | | 24 |
| Forensic Science | 1 | | | | | 1 |
| Health Education | 51 | 7 | 2 | | | 60 |
| Health Information Management | 38 | 9 | 5 | 2 | | 54 |
| History | 8 | 7 | | 1 | | 16 |
| Mathematics | 10 | 4 | 2 | 1 | | 17 |
| Management | 57 | 27 | 15 | 4 | | 103 |
| Marketing | 31 | 7 | 3 | 3 | | 44 |
| Music | 56 | 4 | | | | 60 |
| Music Education | 31 | 7 | 5 | 2 | | 45 |

Enrollment by College, Major and Classification, Fall 2012 (continued)

| | Freshmen | Sophomores | Juniors | Seniors | Graduates | Total |
|--|--------------|------------|------------|------------|-----------|--------------|
| University College (continued) | | | | | | |
| Physical Education | 81 | 31 | 13 | 8 | | 133 |
| Political Science | 16 | 9 | 2 | | | 27 |
| Psychology | 112 | 32 | 13 | 4 | | 161 |
| Recreation | 17 | 14 | 6 | 5 | | 42 |
| Rehabilitation Services | 75 | 17 | 10 | 6 | | 108 |
| Special/ Collaborative Education | 3 | 1 | 3 | | | 7 |
| Sociology | 5 | 1 | 1 | | | 7 |
| Social Work | 69 | 24 | 10 | 9 | | 112 |
| Theatre | 61 | 19 | 6 | 2 | | 88 |
| Secondary Biology | 13 | 4 | 1 | 2 | | 20 |
| Secondary Chemistry | 1 | | 1 | | | 2 |
| Secondary English | 14 | 3 | 4 | 2 | | 23 |
| Secondary Foreign Languages | 1 | | | | | 1 |
| Secondary General Science | 5 | 5 | 2 | 1 | | 13 |
| Secondary History | 14 | 2 | 7 | 1 | | 24 |
| Secondary Mathematics | 6 | 3 | | | | 9 |
| Secondary Marketing | 72 | 14 | 4 | 1 | | 91 |
| Secondary Social Science | 7 | 1 | 1 | 1 | | 10 |
| Undecided | 650 | 125 | 61 | 34 | | 870 |
| Subtotal | 2,360 | 667 | 280 | 145 | | 3,452 |
| Unclassified (Graduate Undecided and MSC) | | | | | | |
| Non-Degree Seeking | 4 | 1 | | 2 | | 7 |
| Graduate Undecided | | | | | 13 | 13 |
| Graduate Certificate | | | | | 2 | 2 |
| Subtotal | 4 | 1 | | 2 | 15 | 22 |

Enrollment by State of Origin and Academic Level, Fall 2012

| State | Undergrad | Grad/Spe | Total | State | Undergrad | Grad/Spe | Total |
|---------------|-----------|----------|-------|-------------------------|--------------|------------|--------------|
| Alaska | 1 | | 1 | Nevada | 6 | | 6 |
| Alabama | 3,606 | 607 | 4,213 | New York | 23 | | 23 |
| Arkansas | 2 | | 2 | Ohio | 67 | 1 | 68 |
| Arizona | 2 | | 2 | Oklahoma | 5 | 1 | 6 |
| California | 88 | 4 | 92 | Oregon | 1 | | 1 |
| Colorado | 4 | | 4 | Pennsylvania | 10 | | 10 |
| Connecticut | 6 | 1 | 7 | Puerto Rico | 1 | | 1 |
| DC | 5 | | 5 | S. Carolina | 14 | 1 | 15 |
| Delaware | 1 | | 1 | Tennessee | 32 | | 32 |
| Florida | 175 | 5 | 180 | Texas | 39 | 4 | 43 |
| Georgia | 527 | 27 | 554 | Virginia | 11 | 3 | 14 |
| Hawaii | 1 | | 1 | Washington | 7 | | 7 |
| Iowa | 1 | | 1 | Wisconsin | 15 | 1 | 16 |
| Illinois | 97 | 6 | 103 | Wyoming | 1 | | 1 |
| Indiana | 15 | | 15 | Subtotal | 5,007 | 677 | 5,684 |
| Kansas | 3 | | 3 | Alberta | 1 | | 1 |
| Kentucky | 2 | | 2 | Armed Forces | 1 | | 1 |
| Louisiana | 16 | 3 | 19 | BC | 3 | | 3 |
| Massachusetts | 8 | 2 | 10 | HE | 1 | | 1 |
| Maryland | 29 | 1 | 30 | HERTS | 2 | | 2 |
| Michigan | 110 | 2 | 112 | Nagpur | | 1 | 1 |
| Minnesota | 5 | 1 | 6 | Ontario | 4 | | 4 |
| Missouri | 20 | | 20 | Quebec | 1 | | 1 |
| Mississippi | 27 | 6 | 33 | VIC | 2 | | 2 |
| N. Carolina | 8 | 1 | 9 | Subtotal (Int'l) | 15 | 1 | 16 |
| Nebraska | 1 | | 1 | Unknown | 108 | 8 | 116 |
| New Jersey | 15 | | 15 | Grand Total | 5,130 | 686 | 5,816 |

Note: State of origin is the state of residence at the time of application to the University.

Enrollment by Alabama County of Residence and Academic Level, Fall 2012

| County | Undergrad | Grad/Sp | Total | County | Undergrad | Grad/Sp | Total |
|-----------|-----------|---------|-------|----------------------|--------------|------------|--------------|
| Autauga | 72 | 15 | 87 | Lawrence | 2 | 1 | 3 |
| Baldwin | 17 | 2 | 19 | Jefferson | 550 | 61 | 611 |
| Barbour | 17 | | 17 | Lauderdale | 14 | 1 | 15 |
| Bibb | 1 | | 1 | Lee | 68 | 14 | 82 |
| Bullock | 59 | 10 | 69 | Limestone | 6 | 1 | 7 |
| Butler | 35 | 6 | 41 | Lowndes | 61 | 6 | 67 |
| Calhoun | 28 | 4 | 32 | Macon | 109 | 30 | 139 |
| Chambers | 56 | 5 | 61 | Madison | 48 | 4 | 52 |
| Cherokee | | 1 | 1 | Marengo | 23 | 1 | 24 |
| Chilton | 14 | 2 | 16 | Marion | 2 | | 2 |
| Choctaw | 15 | 1 | 16 | Mobile | 268 | 17 | 285 |
| Clarke | 22 | | 22 | Monroe | 32 | 8 | 40 |
| Clay | 1 | 1 | 2 | Montgomery | 1,324 | 291 | 1,615 |
| Cleburne | 1 | | 1 | Morgan | 11 | | 11 |
| Coffee | 10 | 2 | 12 | Perry | 15 | 1 | 16 |
| Colbert | 4 | 1 | 5 | Pickens | 5 | | 5 |
| Conecuh | 27 | 3 | 30 | Pike | 14 | 3 | 17 |
| Coosa | 3 | 2 | 5 | Randolph | 3 | | 3 |
| Covington | 7 | 7 | 14 | Russell | 90 | 4 | 94 |
| Crenshaw | 12 | 1 | 13 | Shelby | 19 | 5 | 24 |
| Dale | 20 | 2 | 22 | St Clair | 2 | 1 | 3 |
| Dallas | 137 | 23 | 160 | Sumter | 13 | 1 | 14 |
| DeKalb | 3 | 1 | 4 | Talladega | 41 | 6 | 47 |
| Elmore | 76 | 27 | 103 | Tallapoosa | 18 | 7 | 25 |
| Escambia | 26 | 2 | 28 | Tuscaloosa | 50 | 5 | 55 |
| Etowah | 9 | 2 | 11 | Walker | 5 | | 5 |
| Fayette | 1 | | 1 | Washington | 9 | 1 | 10 |
| Geneva | 3 | 1 | 4 | Wilcox | 30 | 2 | 32 |
| Greene | 17 | | 17 | InState Total | 3,606 | 607 | 4,213 |
| Total | 3,606 | 607 | 4,213 | Non-Alabama* | 1,417 | 71 | 1,488 |
| Hale | 25 | 5 | 30 | | | | |
| Henry | 20 | | 20 | | | | |
| Houston | 36 | 8 | 44 | Unknown | 107 | 8 | 115 |
| Jackson | | 2 | 2 | Grand Total | 5,130 | 686 | 5,816 |

Note: *Non-Alabama includes both U.S. resident and non-resident aliens.

**Enrollment by Academic Load, Academic Level,
Gender and Ethnicity, Fall 2008-12**

| | | 2008 | 2009 | 2010 | 2011 | 2012 | % Change over 2011 |
|-----------------------|---|--------------|--------------|--------------|--------------|--------------|-----------------------|
| Academic Load | Full | 4,473 | 4,561 | 4,833 | 4,600 | 4,966 | +8% |
| | Part | 1,222 | 1,003 | 872 | 825 | 850 | +3% |
| Academic Level | Undergrad | 4,730 | 4,638 | 4,882 | 4,743 | 5,130 | +8% |
| | Grad | 965 | 926 | 823 | 682 | 686 | +1% |
| Gender | Female | 3,458 | 3,456 | 3,467 | 3,303 | 3,540 | +7% |
| | Male | 2,237 | 2,108 | 2,238 | 2,122 | 2,276 | +7% |
| Ethnicity | Black | 5,447 | 5,319 | 5,336 | 5,095 | 5,422 | +6% |
| | White | 185 | 154 | 159 | 148 | 167 | +13% |
| | Asian | 4 | 6 | 9 | 10 | 7 | -30% |
| | Hispanic | 20 | 18 | 19 | 36 | 59 | +64% |
| | American Indian | 5 | 3 | 3 | 1 | 6 | >100% |
| | Native Hawaiian or other Pacific Islander | | | 8 | 2 | 3 | +50% |
| | Two or more | | | 2 | 8 | 21 | >100% |
| | International | 23 | 29 | 40 | 31 | 49 | +58% |
| | Other | | 2 | 5 | 6 | 15 | >100% |
| | Unknown | 11 | 33 | 124 | 88 | 67 | -24% |
| Total | | 5,695 | 5,564 | 5,705 | 5,425 | 5,816 | +7% |



Enrollment by Classification and Residence, Fall 2008-12

| | | 2008 | 2009 | 2010 | 2011 | 2012 | % Change over 2011 |
|-----------------------|------------------------------|-------|-------|-------|-------|-------|--------------------|
| Classification | Freshman | 2,285 | 2,082 | 2,112 | 1,993 | 2,484 | +25% |
| | Sophomore | 937 | 940 | 1,042 | 937 | 952 | +2% |
| | Juniors | 692 | 724 | 838 | 838 | 744 | -11% |
| | Seniors | 781 | 868 | 890 | 975 | 950 | -3% |
| | Ugrad Special | 35 | 24 | | | | |
| | Graduate Special | 5 | 4 | | | | |
| | Masters | 355 | 382 | 539 | 422 | 436 | +3% |
| | "A"/ "AA" NTFYP* Ed.S. | 421 | 371 | 75 | 73 | 73 | 0 |
| | Doctorate | 184 | 169 | 172 | 164 | 160 | -2% |
| | Unclassified | | | 37 | 23 | 17 | -26% |
| Residence | In-State | 3,888 | 3,880 | 4,020 | 3,917 | 4,213 | +8% |
| | Out-of-State | 1,807 | 1,684 | 1,685 | 1,508 | 1,603 | +6% |

Undergrad Enrollment by Academic Unit and Major*
Fall 2008-12

| College/Major | 2008 | 2009 | 2010 | 2011 | 2012 |
|--|-------------|-------------|-------------|-------------|-------------|
| Art | 26 | 24 | 22 | 24 | 22 |
| UC-Art | 0 | 0 | 18 | 26 | 38 |
| Graphic Arts | 24 | 13 | 0 | 0 | 0 |
| UC- Graphic Arts | 0 | 0 | 0 | 0 | 0 |
| Music | 124 | 92 | 53 | 32 | 20 |
| UC- Music | 0 | 0 | 21 | 45 | 60 |
| Theatre | 106 | 101 | 101 | 68 | 51 |
| UC- Theatre | 0 | 0 | 29 | 64 | 88 |
| College of Visual & Performing Arts | 280 | 230 | 244 | 259 | 79 |
| Accounting | 144 | 152 | 110 | 70 | 47 |
| UC- Accounting | 0 | 0 | 27 | 53 | 73 |
| Business Administration | 31 | 10 | 0 | 0 | 0 |
| Computer Information System | 168 | 179 | 137 | 113 | 68 |
| UC-Computer Information System | 0 | 0 | 32 | 65 | 81 |
| Economics | 4 | 3 | 0 | 0 | 0 |
| Finance | 34 | 33 | 21 | 16 | 16 |
| UC- Finance | 0 | 0 | 15 | 19 | 24 |
| Hotel Tourism Management | 1 | 2 | 0 | 0 | 0 |
| Management | 316 | 252 | 202 | 123 | 83 |
| UC- Management | 0 | 0 | 67 | 98 | 103 |
| Marketing | 95 | 97 | 64 | 47 | 34 |
| UC- Marketing | 0 | 0 | 25 | 34 | 44 |
| College of Business Administration | 793 | 728 | 700 | 638 | 573 |
| Health Information Management | 55 | 71 | 52 | 30 | 37 |
| UC- Health Information Management | 0 | 0 | 21 | 29 | 54 |
| Rehabilitation Services | 0 | 0 | 7 | 35 | 58 |
| UC- Rehabilitation Services | 0 | 0 | 16 | 59 | 108 |
| College of Health Sciences | 55 | 71 | 96 | 153 | 257 |
| Child Development | 0 | 0 | 0 | 0 | 0 |
| Human Services | 1 | 0 | 0 | 0 | 0 |
| Language Arts | 3 | 1 | 0 | 0 | 0 |
| Office Administration | 1 | 6 | 0 | 0 | 0 |
| Psychology | 198 | 203 | 171 | 123 | 90 |
| UC-Psychology | 0 | 0 | 58 | 110 | 161 |
| Recreation | 91 | 97 | 81 | 66 | 56 |
| UC- Recreation | 0 | 0 | 4 | 37 | 42 |
| Foreign Language- Spanish | 1 | 2 | 2 | 0 | 0 |
| UC-Secondary Foreign Languages | | | | | 1 |

Undergrad Enrollment by Academic Unit and Major, Fall 2008-12 (Cont')

| College/Major | 2008 | 2009 | 2010 | 2011 | 2012 |
|---|--------------|--------------|--------------|--------------|--------------|
| Undergrad Certification | 8 | 6 | 1 | 1 | 0 |
| Art Education | 2 | 2 | 2 | 0 | 0 |
| Biology & Secondary Education | 17 | 20 | 19 | 11 | 7 |
| UC- Biology & Secondary Education | 0 | 0 | 16 | 12 | 20 |
| Chemistry & Secondary Education | 2 | 2 | 0 | 0 | 0 |
| UC-Chemistry & Secondary Education | 0 | 0 | 0 | 1 | 2 |
| Early Childhood Education | 122 | 137 | 97 | 62 | 50 |
| UC- Early Childhood Education | 0 | 0 | 33 | 59 | 88 |
| Elementary Education | 270 | 258 | 205 | 142 | 97 |
| UC- Elementary Education | 0 | 0 | 58 | 86 | 119 |
| English & Secondary Education | 46 | 58 | 37 | 30 | 29 |
| UC-English & Secondary Education | 0 | 0 | 11 | 16 | 23 |
| Health Education | 29 | 33 | 27 | 18 | 11 |
| UC-Health Education | 0 | 0 | 19 | 28 | 60 |
| History & Secondary Education | 23 | 24 | 22 | 16 | 12 |
| UC-History & Secondary Education | 0 | 0 | 9 | 15 | 24 |
| Math & Secondary Education | 21 | 29 | 16 | 15 | 15 |
| UC-Math & Secondary Education | 0 | 0 | 4 | 9 | 9 |
| Music Education | 52 | 54 | 46 | 31 | 24 |
| UC- Music Education | 0 | 0 | 19 | 30 | 45 |
| Physical Education | 165 | 156 | 114 | 92 | 74 |
| UC- Physical Education | 0 | 0 | 40 | 108 | 133 |
| Psychology Education | 7 | 4 | 0 | 0 | 0 |
| Science Education | 2 | 6 | 0 | 0 | 0 |
| Secondary Marketing Education | 88 | 96 | 66 | 32 | 16 |
| UC- Secondary Marketing Education | 0 | 0 | 47 | 69 | 91 |
| General Science & Secondary Education | 3 | 1 | 5 | 5 | 3 |
| UC- General Science & Secondary Education | 0 | 0 | 4 | 8 | 13 |
| Secondary/Collaborative Education | 13 | 35 | 29 | 31 | 20 |
| UC- Secondary/Collaborative Education | 0 | 0 | 1 | 5 | 7 |
| Social Science & Secondary Education | 8 | 13 | 13 | 8 | 5 |
| UC- Social Science & Secondary Education | 0 | 0 | 4 | 7 | 10 |
| Secondary Education | 0 | 0 | 0 | 0 | 3 |
| Special Education | 45 | 0 | 0 | 0 | 0 |
| College of Education | 1,218 | 1,243 | 1,280 | 1,283 | 1,360 |

Undergrad Enrollment by Academic Unit and Major, Fall 2008-12 (Cont')

| College/Major | 2008 | 2009 | 2010 | 2011 | 2012 |
|---|--------------|--------------|--------------|--------------|--------------|
| Communications | 256 | 282 | 219 | 146 | 109 |
| Communications Studies | 0 | 2 | 0 | 0 | 0 |
| UC- Communications | 0 | 0 | 53 | 124 | 167 |
| Criminal Justice | 340 | 368 | 255 | 194 | 155 |
| UC- Criminal Justice | 0 | 0 | 110 | 205 | 286 |
| English | 27 | 35 | 20 | 23 | 14 |
| UC- English | 0 | 0 | 3 | 17 | 23 |
| History | 19 | 16 | 14 | 8 | 8 |
| UC- History | 0 | 0 | 4 | 7 | 16 |
| Foreign Language-French | 0 | 0 | 0 | 0 | 0 |
| Political Science | 56 | 54 | 49 | 30 | 24 |
| UC- Political Science | 0 | 0 | 10 | 21 | 27 |
| Speech | 1 | 0 | 0 | 0 | 0 |
| Social Work | 131 | 161 | 124 | 97 | 78 |
| UC- Social Work | 0 | 0 | 36 | 86 | 112 |
| Sociology | 16 | 17 | 11 | 1 | 1 |
| UC- Sociology | 0 | 0 | 4 | 0 | 7 |
| College of Liberal Arts & Social Science | 850 | 938 | 912 | 968 | 1,027 |
| Biology | 423 | 400 | 293 | 220 | 206 |
| UC- Biology | 0 | 0 | 106 | 208 | 231 |
| Chemistry | 44 | 60 | 57 | 50 | 53 |
| UC- Chemistry | 0 | 0 | 28 | 69 | 64 |
| Computer Science | 75 | 75 | 50 | 31 | 26 |
| UC- Computer Science | 0 | 0 | 25 | 53 | 75 |
| Engineering | 31 | 17 | 0 | 0 | 0 |
| UC- Engineering | 0 | 0 | 17 | 30 | 35 |
| Mathematics | 50 | 51 | 66 | 44 | 36 |
| UC- Mathematics | 0 | 0 | 13 | 17 | 17 |
| Forensic Science | 0 | 0 | 0 | 0 | 13 |
| UC-Forensic Science | 0 | 0 | 0 | 0 | 1 |
| Physics | 1 | 1 | 0 | 0 | 0 |
| Marine Biology | 5 | 4 | 0 | 0 | 0 |
| Medical Lab Technology | 0 | 0 | 0 | 0 | 0 |
| College of Science, Mathematics & Technology | 629 | 608 | 655 | 722 | 757 |
| Undecided | 909 | 819 | 995 | 720 | 870 |
| Non-Degree Seeking | 0 | 0 | 0 | 0 | 7 |
| Total Undergraduates Enrollment | 4,730 | 4,638 | 4,882 | 4,743 | 5,130 |

*UC-University College Enrollment

Graduate School Enrollment by Academic Unit and Major Fall 2008-12

| College/Majors | 2008 | 2009 | 2010 | 2011 | 2012 |
|---|-------------|-------------|-------------|-------------|-------------|
| Accountancy | 23 | 28 | 38 | 19 | 17 |
| College of Business Administration | 23 | 28 | 38 | 19 | 17 |
| Administration | 79 | 19 | 17 | 12 | 3 |
| Applied Technology | 0 | 0 | 0 | 0 | 11 |
| Biology Education | 47 | 33 | 33 | 23 | 17 |
| Early Childhood Education | 42 | 40 | 35 | 31 | 26 |
| Elementary Education | 110 | 141 | 110 | 81 | 76 |
| English Education | 41 | 40 | 28 | 20 | 17 |
| Clinical & Mental Health Counseling | 76 | 82 | 69 | 65 | 78 |
| Health Education | 5 | 7 | 4 | 2 | 5 |
| History Education | 13 | 14 | 11 | 7 | 5 |
| Instructional Leadership Program | 0 | 20 | 24 | 28 | 32 |
| Language Arts | 4 | 1 | 0 | 0 | 0 |
| Library Education Media | 22 | 19 | 23 | 15 | 12 |
| Educational Leadership, Policy & Law | 70 | 72 | 74 | 81 | 73 |
| Mathematics Education | 63 | 51 | 44 | 35 | 22 |
| Music Education | 5 | 8 | 6 | 6 | 11 |
| Physical Education | 27 | 32 | 30 | 18 | 10 |
| Reading /Reading Specialist | 19 | 14 | 8 | 5 | 5 |
| School Counseling | 51 | 40 | 26 | 27 | 21 |
| Social Science Education | 33 | 31 | 20 | 17 | 12 |
| Special Education | 80 | 70 | 44 | 29 | 21 |
| College of Education | 787 | 734 | 606 | 502 | 457 |
| History | 7 | 6 | 4 | 2 | 5 |
| College of Liberal Arts and Social Science | 7 | 6 | 4 | 2 | 5 |
| Biology | 15 | 13 | 15 | 8 | 10 |
| Forensic Science | 0 | 0 | 0 | 7 | 8 |
| Mathematics | 4 | 5 | 1 | 1 | 1 |
| Microbiology | 7 | 10 | 14 | 11 | 14 |
| College of Science, Mathematics & Technology | 26 | 28 | 30 | 27 | 33 |
| Physical Therapy | 107 | 87 | 84 | 72 | 73 |
| Occupational Therapy | 3 | 23 | 36 | 40 | 50 |
| Rehabilitation Counseling | 14 | 16 | 20 | 19 | 32 |
| Prosthetics & Orthotics | | | | | 4 |
| College of Health Sciences | 124 | 126 | 140 | 131 | 159 |
| Undecided | 5 | 4 | 5 | 1 | 13 |
| Graduate Certificate | | | | | 2 |
| Total Graduate Enrollment | 965 | 926 | 823 | 682 | 686 |

Graduate (Masters Level) Enrollment by Academic Unit And Major Fall 2008-12

| College/Majors | 2008 | 2009 | 2010 | 2011 | 2012 |
|---|-------------|-------------|-------------|-------------|-------------|
| Accountancy | 23 | 28 | 38 | 19 | 17 |
| College of Business Administration | 23 | 28 | 38 | 19 | 17 |
| Administration | 60 | 3 | 2 | 1 | 0 |
| Applied Technology | 0 | 0 | 0 | 0 | 11 |
| Biology Education | 3 | 1 | 20 | 7 | 1 |
| Early Childhood Education | 15 | 16 | 18 | 11 | 8 |
| Elementary Education | 38 | 74 | 79 | 46 | 39 |
| English Education | 5 | 4 | 19 | 9 | 5 |
| Clinical & Mental Health Counseling | 67 | 75 | 65 | 61 | 66 |
| Health Education | 1 | 1 | 3 | 2 | 1 |
| History Education | 3 | 1 | 6 | 3 | 1 |
| Instructional Leadership Program | 0 | 20 | 24 | 28 | 32 |
| Language Arts | 0 | 1 | 0 | 0 | 0 |
| Library Education Media | 11 | 11 | 17 | 12 | 7 |
| Mathematics Education | 2 | 3 | 2 | 2 | 6 |
| Music Education | 13 | 18 | 28 | 16 | 4 |
| Physical Education | 17 | 14 | 8 | 5 | 8 |
| Reading /Reading Specialist | 39 | 32 | 22 | 22 | 5 |
| School Counseling | 1 | 0 | 0 | 0 | 18 |
| Social Science Education | 3 | 2 | 14 | 9 | 4 |
| Special Education | 12 | 13 | 7 | 7 | 7 |
| College of Education | 296 | 291 | 366 | 262 | 223 |
| History | 7 | 6 | 4 | 2 | 5 |
| College of Liberal Arts and Social Science | 7 | 6 | 4 | 2 | 5 |
| Biology | 8 | 13 | 15 | 8 | 10 |
| Forensic Science | 0 | 0 | 0 | 7 | 8 |
| Mathematics | 4 | 5 | 1 | 1 | 1 |
| College of Science, Mathematics & Technology | 12 | 18 | 16 | 16 | 19 |
| Occupational Therapy | 3 | 23 | 36 | 40 | 50 |
| Rehabilitation Counseling | 14 | 16 | 20 | 19 | 32 |
| Prosthetics & Orthotics | 0 | 0 | 0 | 0 | 4 |
| College of Health Sciences | 17 | 39 | 56 | 59 | 86 |
| Total Masters Enrollment | 355 | 382 | 480 | 358 | 350 |

**Graduate (“A” & “Aa” Certificate) Enrollment
by Academic Unit And Major, Fall 2008-12**

| College/Major | 2008 | 2009 | 2010 | 2011 | 2012 |
|--|-------------|-------------|-------------|-------------|-------------|
| Administration | 2 | 0 | 0 | 0 | 0 |
| Early Childhood Education | 1 | 1 | 0 | 0 | 0 |
| Elementary Education | 2 | 3 | 0 | 0 | 0 |
| History Education | 0 | 0 | 0 | 0 | 0 |
| Library Education Media | 3 | 0 | 0 | 2 | 2 |
| Reading/ Reading Specialist | 0 | 0 | 0 | 0 | 0 |
| School Counseling | 0 | 0 | 0 | 0 | 0 |
| College of Education | 8 | 4 | 0 | 2 | 2 |
| Total “A” & “AA” Certificate Enrollment | 8 | 4 | 0 | 2 | 2 |

**Graduate (Alternative Fifth-Year Program) Enrollment
by Academic Unit And Major, Fall 2008-12**

| College/Majors | 2008 | 2009 | 2010 | 2011 | 2012 |
|--|-------------|-------------|-------------|-------------|-------------|
| Administration | 0 | 0 | 0 | 0 | 0 |
| Biology Education | 43 | 31 | 9 | 11 | 11 |
| Early Childhood Education | 17 | 10 | 6 | 8 | 5 |
| Elementary Education | 47 | 44 | 8 | 11 | 13 |
| English Education | 36 | 36 | 9 | 11 | 12 |
| Clinical & Mental Health Counseling | 5 | 6 | 0 | 0 | 0 |
| Health Education | 4 | 6 | 1 | 0 | 4 |
| History Education | 10 | 11 | 3 | 2 | 1 |
| Language Arts | 4 | 1 | 0 | 0 | 0 |
| Mathematics Education | 54 | 44 | 8 | 11 | 13 |
| Music Education | 3 | 5 | 4 | 4 | 7 |
| Physical Education | 14 | 14 | 2 | 2 | 2 |
| Reading /Reading Specialist | 2 | 0 | 0 | 0 | 0 |
| School Counseling | 1 | 0 | 0 | 0 | 0 |
| Social Science Education | 27 | 26 | 4 | 4 | 3 |
| Special Education | 68 | 57 | 37 | 22 | 14 |
| College of Education | 335 | 285 | 91 | 86 | 85 |
| Total Alternative Fifth-Year Enrollment | 335 | 285 | 91 | 86 | 85 |

**Graduate (Education Specialist Degree) Enrollment
by Academic Unit And Major, Fall 2008-12**

| College/Major | 2008 | 2009 | 2010 | 2011 | 2012 |
|--|-------------|-------------|-------------|-------------|-------------|
| Administration | 17 | 16 | 15 | 11 | 3 |
| Biology Education | 1 | 1 | 4 | 5 | 4 |
| Early Childhood Education | 9 | 13 | 11 | 12 | 12 |
| Elementary Education | 23 | 20 | 23 | 24 | 24 |
| Clinical & Mental Health Counseling | 4 | 7 | 4 | 4 | 12 |
| History Education | 0 | 2 | 2 | 2 | 2 |
| Library Education Media | 8 | 8 | 6 | 3 | 5 |
| Mathematics Education | 2 | 4 | 4 | 3 | 3 |
| Reading /Reading Specialist | 0 | 0 | 0 | 0 | 0 |
| School Counseling | 11 | 8 | 4 | 5 | 3 |
| Social Science Education | 3 | 3 | 2 | 4 | 5 |
| College of Education | 78 | 82 | 75 | 73 | 73 |
| Total Education Specialist Enrollment | 78 | 82 | 75 | 73 | 73 |

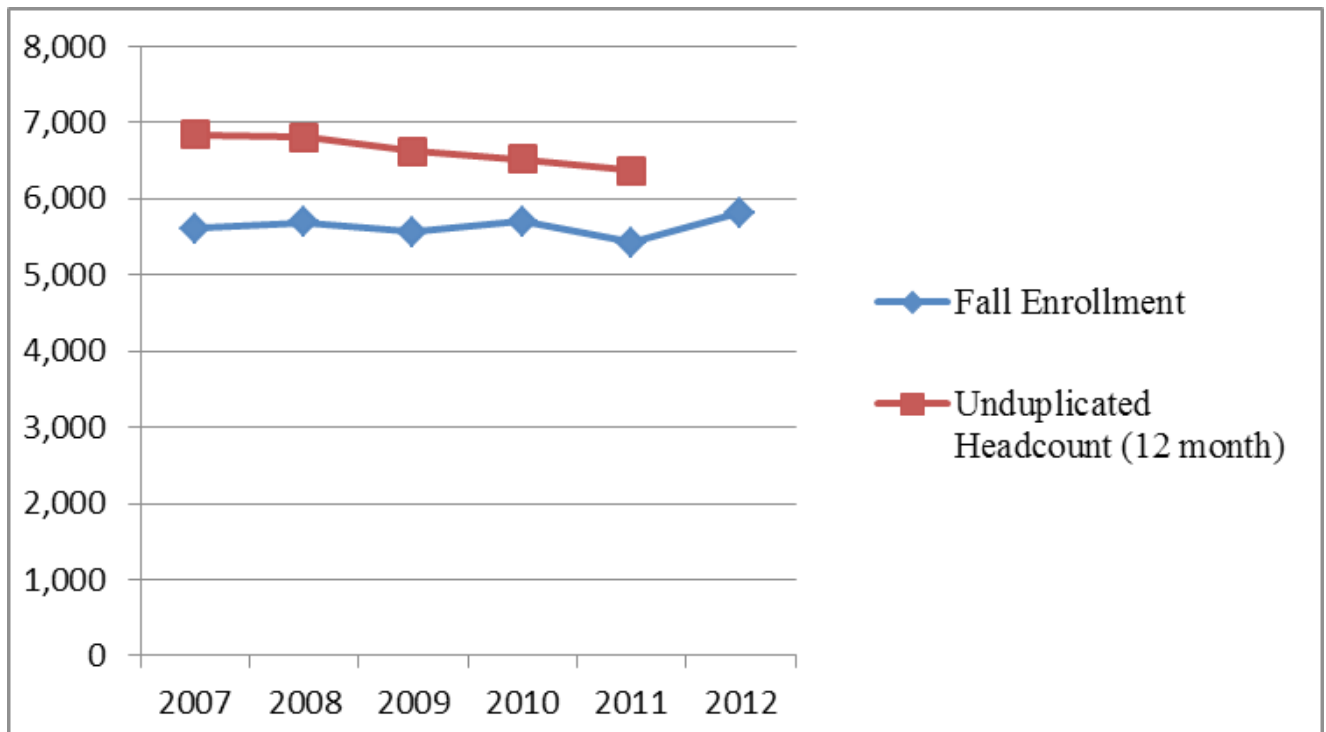
**Graduate (Doctorate Level) Enrollment By Academic Unit And Major
Fall 2008-12**

| College/Major | 2008 | 2009 | 2010 | 2011 | 2012 |
|---|-------------|-------------|-------------|-------------|-------------|
| Microbiology | 7 | 10 | 14 | 11 | 14 |
| College of Science, Mathematics & Technology | 7 | 10 | 14 | 11 | 14 |
| Educational Leadership, Policy and Law | 70 | 72 | 74 | 81 | 73 |
| College of Education | 70 | 72 | 74 | 81 | 73 |
| Physical Therapy | 107 | 87 | 84 | 72 | 73 |
| College of Health Sciences | 107 | 87 | 84 | 72 | 73 |
| Total Doctorate Enrollment | 184 | 169 | 172 | 164 | 160 |

**Total Fall Enrollment Full-Time Equivalent (FTE) and
12-Month Unduplicated Headcount, 2007-12**

| | 2007 | 2008 | 2009 | 2010 | 2011 | 2012 | % Change over 2011 |
|--|---------|---------|---------|---------|---------|---------|-----------------------|
| Fall Enrollment | 5,608 | 5,695 | 5,564 | 5,705 | 5,425 | 5,816 | +7% |
| FTE (Fall Term) | 5,212 | 5,265 | 5,211 | 5,391 | 5,192 | 5,575 | +7% |
| | 2007-08 | 2008-09 | 2009-10 | 2010-11 | 2011-12 | 2012-13 | % Change over 2011 |
| Unduplicated Headcount (12 months) | 6,838 | 6,806 | 6,625 | 6,517 | 6,368 | N/A | -2% |

**Figure 3. Total Fall Enrollment FTE and
12-Month Unduplicated Headcount, 2007-12**



Total Enrollment by County, 2008-12

| Counties | 2008 | 2009 | 2010 | 2011 | 2012 |
|------------|-------|-------|-------|-------|-------|
| Jefferson | 576 | 607 | 604 | 579 | 611 |
| Mobile | 318 | 304 | 327 | 282 | 285 |
| Montgomery | 1,304 | 1,341 | 1,507 | 1,545 | 1,615 |
| Autauga | 75 | 71 | 83 | 84 | 87 |
| Baldwin | 17 | 16 | 22 | 20 | 19 |
| Barbour | 27 | 18 | 19 | 14 | 17 |
| Bibb | 1 | | | 1 | 1 |
| Blount | | | | | |
| Bullock | 54 | 43 | 40 | 49 | 69 |
| Butler | 36 | 31 | 40 | 37 | 41 |
| Calhoun | 7 | 6 | 14 | 19 | 32 |
| Chambers | 46 | 54 | 57 | 52 | 61 |
| Cherokee | 1 | 1 | 1 | 2 | 1 |
| Chilton | 31 | 29 | 23 | 16 | 16 |
| Choctaw | 14 | 19 | 22 | 16 | 16 |
| Clarke | 19 | 16 | 23 | 21 | 22 |
| Clay | 1 | 1 | 3 | 2 | 2 |
| Cleburne | | | | | 1 |
| Coffee | 17 | 15 | 15 | 15 | 12 |
| Colbert | 6 | 2 | 5 | 3 | 5 |
| Conecuh | 28 | 25 | 23 | 22 | 30 |
| Coosa | 4 | 4 | 8 | 6 | 5 |
| Covington | 18 | 15 | 18 | 15 | 14 |
| Crenshaw | 12 | 12 | 13 | 13 | 13 |
| Cullman | | | | | |
| Dale | 14 | 18 | 21 | 21 | 22 |
| Dallas | 141 | 165 | 182 | 168 | 160 |
| DeKalb | 0 | 1 | 2 | 4 | 4 |
| Elmore | 83 | 68 | 82 | 99 | 103 |
| Escambia | 20 | 18 | 30 | 19 | 28 |
| Etowah | 36 | 25 | 22 | 11 | 11 |
| Fayette | 1 | 1 | 2 | | 1 |
| Franklin | | | | | |
| Geneva | 2 | 2 | 2 | 2 | 4 |
| Greene | 13 | 13 | 10 | 16 | 17 |
| Hale | 31 | 31 | 31 | 34 | 30 |

Total Enrollment by County, 2008-12 (continued)

| Counties | 2008 | 2009 | 2010 | 2011 | 2012 |
|--------------------------|--------------|--------------|--------------|--------------|--------------|
| Henry | 8 | 10 | 10 | 13 | 20 |
| Houston | 29 | 25 | 27 | 25 | 44 |
| Jackson | 2 | 1 | 3 | 4 | 2 |
| Lamar | 1 | | | | |
| Lauderdale | 10 | 8 | 9 | 10 | 15 |
| Lawrence | 14 | 10 | 8 | 6 | 3 |
| Lee | 65 | 58 | 71 | 55 | 82 |
| Limestone | 1 | 2 | 5 | 6 | 7 |
| Lowndes | 54 | 57 | 62 | 59 | 67 |
| Macon | 124 | 106 | 109 | 107 | 139 |
| Madison | 45 | 41 | 47 | 41 | 52 |
| Marengo | 29 | 35 | 30 | 33 | 24 |
| Marion | | | 1 | 1 | 2 |
| Marshall | | 1 | 2 | 1 | |
| Monroe | 36 | 31 | 31 | 37 | 40 |
| Morgan | 10 | 9 | 8 | 9 | 11 |
| Perry | 40 | 38 | 38 | 24 | 16 |
| Pickens | 9 | 9 | 7 | 7 | 5 |
| Pike | 22 | 22 | 21 | 15 | 17 |
| Randolph | 6 | 3 | 2 | 1 | 3 |
| Russell | 54 | 44 | 58 | 75 | 94 |
| St. Clair | 16 | 25 | 4 | 5 | 3 |
| Shelby | 4 | 3 | 31 | 28 | 24 |
| Sumter | 24 | 18 | 13 | 10 | 14 |
| Talladega | 63 | 51 | 56 | 38 | 47 |
| Tallapoosa | 49 | 36 | 37 | 28 | 25 |
| Tuscaloosa | 37 | 40 | 35 | 45 | 55 |
| Walker | 8 | 3 | 5 | 3 | 5 |
| Washington | 5 | 5 | 14 | 13 | 10 |
| Wilcox | 23 | 24 | 26 | 27 | 32 |
| Winston | 1 | | | | |
| Out-of-State/ Country | 1,807 | 188 | 1,685 | 1,512 | 1,603 |
| Unknown | 146 | 8 | | 53 | |
| Total | 5,695 | 3,880 | 5,706 | 5,425 | 5,816 |

Enrollment in University Housing, Fall 2012

36 » Student Information

| University Housing | Capacity Occupancy | Students Enrolled | Occupancy Rate |
|----------------------------|-----------------------|----------------------|-------------------|
| Abercrombie Hall Male | 132 | 132 | 100% |
| Bibb Graves Hall Female | 131 | 131 | 100% |
| Simpson Hall Female | 163 | 163 | 100% |
| Bessie Benson Hall Female | 141 | 141 | 100% |
| George N. Card Hall Male | 118 | 117 | 99% |
| Girard Apartments Female | 23 | 25 | 100% |
| Girard Apartments Male | 33 | 28 | 85% |
| W. McGinty Female | 31 | 31 | 100% |
| W. McGinty Male | 28 | 28 | 100% |
| Peyton Finley Dorms Female | 44 | 34 | 77% |
| Peyton Finley Dorms Male | 16 | 16 | 100% |
| New Facility I Female | 117 | 117 | 100% |
| New Facility I Male | 138 | 138 | 100% |
| New Facility II Female | 176 | 176 | 100% |
| New Facility II Male | 67 | 67 | 100% |
| Bessie Estell Hall Female | 217 | 212 | 98% |
| Martin Luther King Male | 217 | 217 | 100% |
| C. J. Dunn Towers Female | 478 | 443 | 93% |
| Woodside Glenn Female | 46 | 46 | 100% |
| Woodside Glenn Male | 72 | 72 | 100% |
| Vaughn Meadows Female | 63 | 63 | 100% |
| Vaughn Meadows Male | 12 | 12 | 100% |
| Total Females | 1,630 | 1,582 | 95% |
| Total Males | 833 | 827 | 98% |
| Grand Total | 2,463 | 2,409 | 97% |

New Student

First-time Freshman by Full-Time/Part-Time Status, Gender, Ethnicity and Residence, Fall 2012

| | | Full-Time | Part-Time | Total |
|------------------|-----------------|--------------|-----------|--------------|
| Gender | Male | 596 | 24 | 620 |
| | Female | 840 | 19 | 859 |
| | Total | 1,436 | 43 | 1,479 |
| Ethnicity | Black | 1,352 | 41 | 1,393 |
| | White | 20 | 2 | 22 |
| | Hispanic | 19 | | 19 |
| | American Indian | 1 | | 1 |
| | Asian | 2 | | 2 |
| | International | 17 | | 17 |
| | Other | 8 | | 8 |
| | Two or more | 10 | | 10 |
| | Race/Unknown | 6 | | 6 |
| | Total | 1,436 | 43 | 1,479 |
| Residence | In-State | 938 | 33 | 971 |
| | Out-of-State | 498 | 10 | 508 |
| | Total | 1,436 | 43 | 1,479 |



First-time Freshman by Gender, Ethnicity and Residence, Fall 2008-12

| | | 2008 | 2009 | 2010 | 2011 | 2012 | % Change over 2011 |
|------------------|----------------------|--------------|--------------|--------------|--------------|--------------|--------------------|
| Gender | Male | 638 | 518 | 498 | 494 | 620 | +26% |
| | Female | 740 | 703 | 603 | 612 | 859 | +40% |
| | Total | 1,378 | 1,221 | 1,101 | 1,106 | 1,479 | +34% |
| Ethnicity | Black | 1,356 | 1,187 | 994 | 1,057 | 1,393 | +32% |
| | White | 11 | 6 | 10 | 11 | 22 | +100% |
| | Asian | | 1 | | 2 | 2 | 0 |
| | Hispanic | 5 | 6 | 4 | 17 | 19 | +12% |
| | American Indian | 1 | | | 1 | 1 | 0 |
| | International | 3 | 6 | 7 | 6 | 17 | >100% |
| | Other | | 2 | 7 | 2 | 8 | >100% |
| | Two or more | | | 1 | 3 | 10 | >100% |
| | Race/ Unknown | 2 | 13 | 78 | 7 | 6 | -14% |
| | Total | 1,378 | 1,221 | 1,101 | 1,106 | 1,479 | +34% |
| Residence | In-State | 734 | 704 | 692 | 708 | 971 | +37% |
| | Out-of-State | 644 | 517 | 409 | 398 | 508 | +28% |
| | Total | 1,378 | 1,221 | 1,101 | 1,106 | 1,479 | +34% |
| | In-State Pct. | 53% | 57% | 63% | 64% | 66% | +3% |

Average ACT, SAT and High School GPA for First-time Freshman, Fall 2008-12

| | 2008 | 2009 | 2010 | 2011 | 2012 |
|----------------------------|------|------|------|------|------|
| ACT Composite Score | 16.5 | 16.5 | 17.2 | 17.3 | 17.5 |
| SAT Verbal | 410 | 440 | 416 | 426 | 427 |
| SAT Mathematics | 401 | 420 | 415 | 427 | 424 |
| High School GPA | 2.74 | 2.93 | 2.75 | 2.76 | 2.80 |

New Transfer Student by Gender, Ethnicity, Residence and Classification, Fall 2012

| | | Full-Time | Part-Time | Total |
|-----------------------|---------------|------------|-----------|------------|
| Gender | Male | 64 | 6 | 70 |
| | Female | 105 | 20 | 125 |
| | Total | 169 | 26 | 195 |
| Ethnicity | Black | 157 | 24 | 181 |
| | White | 5 | 1 | 6 |
| | Hispanic | 1 | | 1 |
| | Asian | | | |
| | International | 3 | | 3 |
| | Two Or More | 1 | | 1 |
| | Unknown | | 1 | 1 |
| | Other | | | |
| | Total | 169 | 26 | 195 |
| Residence | In-State | 131 | 26 | 157 |
| | Out-Of-State | 38 | | 38 |
| | Total | 169 | 26 | 195 |
| Classification | Freshmen | 86 | 16 | 102 |
| | Sophomore | 54 | 4 | 58 |
| | Junior | 28 | 6 | 34 |
| | Senior | 1 | | 1 |
| | Total | 169 | 26 | 195 |

New Transfer Students by Gender, Classification, Ethnicity and Residence, 2008-12

| | | 2008 | 2009 | 2010 | 2011 | 2012 | % Change over 2011 |
|-----------------------|-----------------------|------------|------------|------------|------------|------------|--------------------|
| Gender | Male | 101 | 93 | 130 | 95 | 70 | -26% |
| | Female | 112 | 118 | 155 | 141 | 125 | -11% |
| Classification | Total | 213 | 211 | 285 | 236 | 195 | -17% |
| | Freshmen | 130 | 96 | 183 | 148 | 102 | -31% |
| | Sophomore | 57 | 72 | 57 | 55 | 58 | +5% |
| | Junior | 16 | 28 | 41 | 32 | 34 | +6% |
| | Senior | 9 | 13 | 4 | 1 | 1 | 0% |
| | Undergraduate Special | 1 | 2 | | | | |
| | Total | 213 | 211 | 285 | 236 | 195 | -17% |
| Ethnicity | Black | 194 | 197 | 261 | 214 | 181 | -15% |
| | White | 14 | 4 | 9 | 10 | 6 | -40% |
| | Hispanic | 3 | 2 | 2 | 2 | 1 | -50% |
| | American Indian | | | | | 1 | |
| | Asian | | | | 1 | | -100% |
| | International | 2 | | 3 | 2 | 3 | +50% |
| | Two Or More | | | 1 | 1 | 1 | 0% |
| | Race, Unknown | | 8 | 9 | 6 | 1 | -83% |
| | Other | | | | | | |
| | Total | 213 | 211 | 285 | 236 | 195 | -17% |
| Residence | In-State | 147 | 168 | 207 | 184 | 157 | -15% |
| | Out-Of-State | 66 | 43 | 78 | 52 | 38 | -27% |
| | Total | 213 | 211 | 285 | 236 | 195 | -17% |

**New Graduate by Full-time/Part-time Status,
Gender, Ethnicity and Residence, Fall 2012**

| | | Full-Time | Part-Time | Total |
|------------------|-----------------|------------------|------------------|--------------|
| Gender | Male | 48 | 17 | 65 |
| | Female | 75 | 58 | 133 |
| | Total | 123 | 75 | 198 |
| Ethnicity | Black | 78 | 65 | 143 |
| | White | 36 | 8 | 44 |
| | Hispanic | 2 | 1 | 3 |
| | American Indian | 3 | | 3 |
| | Asian | | | |
| | International | 2 | | 2 |
| | Other | 2 | | 2 |
| | Two Or More | | | |
| | Race/Unknown | | 1 | 1 |
| | Total | 123 | 75 | 198 |
| | In-State | 97 | 65 | 162 |
| | Out-Of-State | 26 | 10 | 36 |
| | Total | 123 | 75 | 198 |

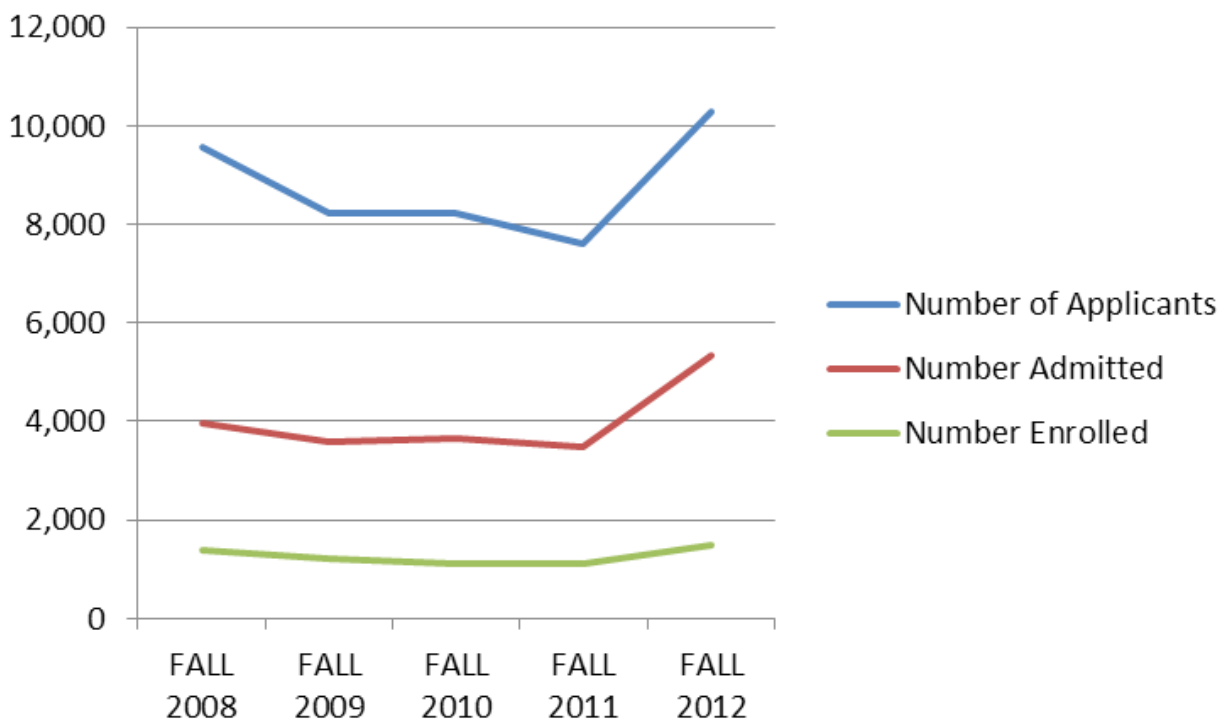
Admission

Fact Book 2012

**Number of First-Time, First-Year (Freshman) Applicants,
Admitted and Enrolled, Fall 2008-12**

| | Fall 2008 | Fall 2009 | Fall 2010 | Fall 2011 | Fall 2012 |
|------------------------|-----------|-----------|-----------|-----------|-----------|
| No. of Applicants | 9,561 | 8,229 | 8,231 | 7,592 | 10,245 |
| No. Admitted | 3,978 | 3,598 | 3,641 | 3,495 | 5,251 |
| % of Applied Admitted | 42% | 44% | 44% | 46% | 51% |
| No. of Enrolled | 1,378 | 1,221 | 1,101 | 1,106 | 1,479 |
| % of Admitted Enrolled | 34.64% | 33.93% | 33.1% | 31.6% | 28.17% |

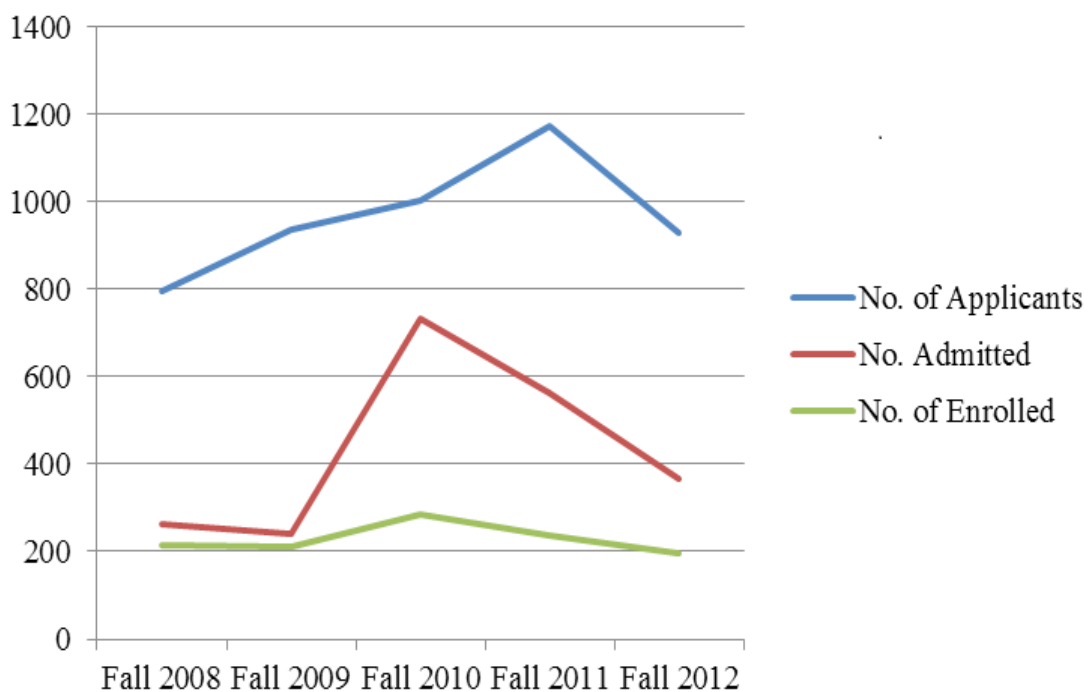
**Figure 4. Number of First-Time, First-Year (Freshman) Applicants,
Admitted and Enrolled, Fall 2008-12**



Number of Transfer Students Applicants, Admitted and Enrolled, Fall 2008-12

| | Fall 2008 | Fall 2009 | Fall 2010 | Fall 2011 | Fall 2012 |
|-------------------------------|-----------|-----------|-----------|-----------|-----------|
| No. of Applicants | 797 | 937 | 1,004 | 1,172 | 863 |
| No. Admitted | 264 | 241 | 734 | 563 | 315 |
| % of Applied Admitted | 33.12% | 25.7% | 73.11% | 48.04% | 36.5% |
| No. of Enrolled | 213 | 211 | 285 | 236 | 195 |
| % of Admitted Enrolled | 80.68% | 87.5% | 38.83% | 41.92% | 61.99% |

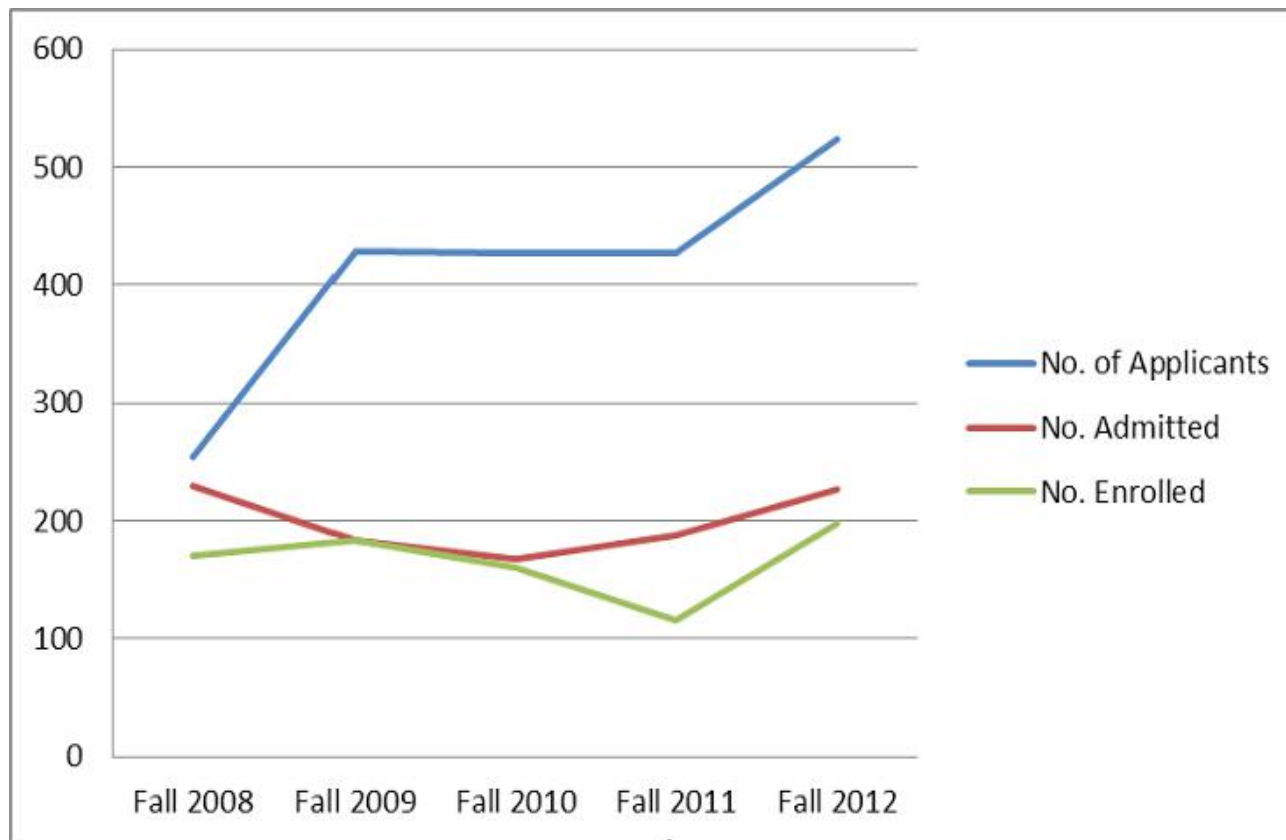
Figure 5. Number of Transfer Students Applicants, Admitted and Enrolled, Fall 2008-12



Number of Graduate Applicants, Admitted and Enrolled, Fall 2008-12

| | Fall 2008 | Fall 2009 | Fall 2010 | Fall 2011 | Fall 2012 |
|-------------------------------|-----------|-----------|-----------|-----------|-----------|
| No. of Applicants | 254 | 428 | 427 | 427 | 524 |
| No. Admitted | 230 | 183 | 168 | 187 | 227 |
| % of Applied Admitted | 67.3% | 42.7% | 37.7% | 26.9% | 37.7% |
| No. Enrolled | 171 | 183 | 161 | 115 | 198 |
| % of Admitted Enrolled | 74.3% | 100% | 95.8% | 61.4% | 87.2% |

**Figure 6. Number of Graduate Applicants,
Admitted and Enrolled, Fall 2008-12**



Graduation Information

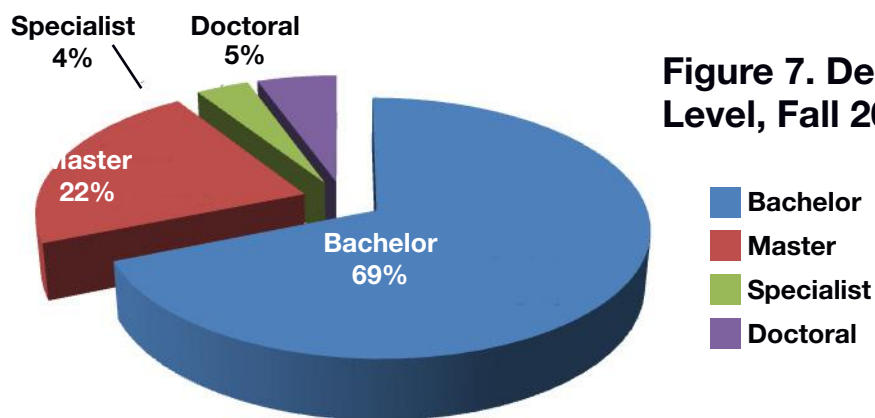


Figure 7. Degrees conferred by Degree Level, Fall 2011-Summer 2012

Degrees Conferred by Colleges and Degree level, 2011-12 (Summer, Fall, Spring)

| College | Degree Level | | | | Total |
|--|--------------|------------|------------|-----------|------------|
| | Bachelor's | Master's | Specialist | Doctoral | |
| College of Liberal Arts & Social Sciences | 158 | | | | 158 |
| College of Business Administration | 107 | 24 | | | 131 |
| College of Education | 155 | 135 | 20 | 10 | 320 |
| College of Health Sciences | 30 | 20 | | 33 | 83 |
| College of Science, Mathematics & Technology | 78 | 5 | | | 83 |
| College of Visual & Performing Arts | 22 | | | | 22 |
| Total | 550 | 184 | 20 | 43 | 797 |

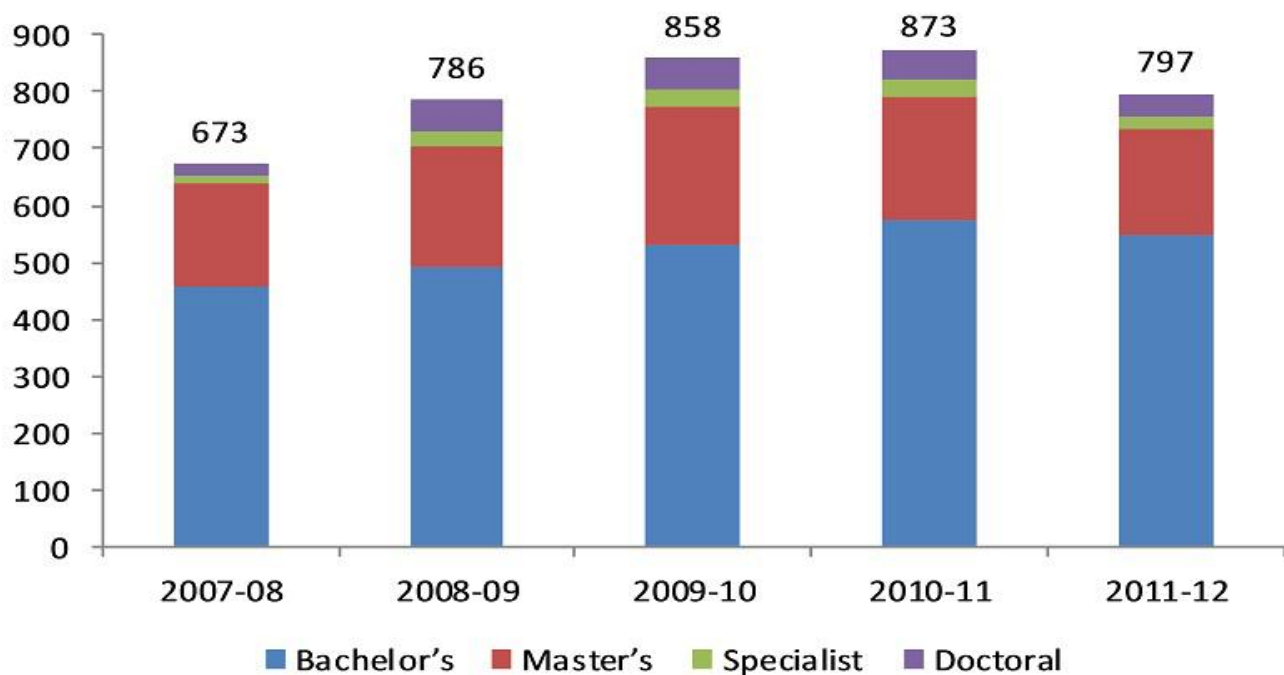
**Degrees Conferred by Degree Level and Gender,
2011-12 (Summer, Fall, Spring)**

| Gender | Degree Level | | | | |
|--------|--------------|--------|------------|----------|-------|
| | Bachelor | Master | Specialist | Doctoral | Total |
| Female | 342 | 131 | 15 | 31 | 519 |
| Male | 208 | 53 | 5 | 12 | 278 |
| Total | 550 | 184 | 20 | 43 | 797 |

**Degrees Conferred by Degree Level,
2007-08 through 2011-12 (Summer, Fall, Spring)**

| Degree Level | Year | | | | |
|--------------|---------|---------|---------|---------|---------|
| | 2007-08 | 2008-09 | 2009-10 | 2010-11 | 2011-12 |
| Bachelor's | 455 | 493 | 530 | 574 | 550 |
| Master's | 182 | 211 | 242 | 215 | 184 |
| Specialist | 15 | 24 | 32 | 30 | 20 |
| Doctoral | 21 | 58 | 54 | 54 | 43 |
| Total | 673 | 786 | 858 | 873 | 797 |

**Figure 8. Degrees Conferred by Level,
2007-08 through 2011-12 (Summer, Fall, Spring)**



**Degrees Conferred by Academic Colleges and Degree Level,
2011-12 (Summer, Fall, Spring)**

| CIP | Major | Bachelor's | Master's | Specialist | Doctoral | Total |
|--|--|-------------------|-----------------|-------------------|-----------------|--------------|
| College of Liberal Arts & Social Sciences | | | | | | |
| 09.0101 | Communication | 43 | | | | 43 |
| 23.0101 | English | 10 | | | | 10 |
| 43.0104 | Criminal Justice | 54 | | | | 54 |
| 44.0701 | Social Work | 40 | | | | 40 |
| 45.1001 | Political Science | 5 | | | | 5 |
| 45.1101 | Sociology | | | | | |
| 54.0101 | History | 6 | | | | 6 |
| Subtotal | | 158 | | | | 158 |
| College of Business Administration | | | | | | |
| 11.0401 | Computer Information Systems | 31 | | | | 31 |
| 52.0201 | Business Management & Administration | 38 | | | | 38 |
| 52.0801 | Banking And Finance | 2 | | | | 2 |
| 52.1401 | Marketing & Purchasing | 13 | | | | 13 |
| 52.0301 | Accountancy | 23 | 24 | | | 47 |
| Subtotal | | 107 | 24 | | | 131 |
| College of Education | | | | | | |
| 13.1001 | Special Education (Mr) | 7 | 13 | | | 20 |
| 13.1202 | Elementary Education | 37 | | | | 37 |
| 13.1205 | Secondary Education | 22 | 6 | | | 28 |
| 13.1210 | Pre-Elementary Education | 9 | 14 | | | 23 |
| 13.1312 | Music Education | 1 | | | | 1 |
| 13.1314 | Physical Education | 26 | | | | 26 |
| 31.0301 | Parks and Recreation Management | 18 | | | | 18 |
| 42.0101 | Psychology | 35 | | | | 35 |
| 13.0401 | Educational Leadership and Administration, general | | 16 | | 10 | 26 |
| 13.0501 | Library Educational Media | | 7 | | | 7 |
| 13.1101 | School Counseling | | 6 | | | 6 |
| 13.1206 | P-12 Education | | 60 | | | 60 |
| 11.1099 | Applied Technology | | | | | |
| 44.9999 | Agency Counseling | | 13 | | | 13 |
| 13.0101 | Education | | | 20 | | 20 |
| Subtotal | | 155 | 135 | 20 | 10 | 320 |

**Degrees Conferred by Academic Colleges and Degree Level,
2011-12 (Summer, Fall, Spring) continued**

| CIP | Major | Bachelor's | Master's | Specialist | Doctoral | Total |
|---|-------------------------------|-------------------|-----------------|-------------------|-----------------|--------------|
| College of Science, Mathematics and Technology | | | | | | |
| 11.0701 | Computer Science | 8 | | | | 8 |
| 26.0101 | Biology | 48 | 2 | | | 50 |
| 26.0502 | Microbiology | | | | | |
| 26.1302 | Marine Biology | | | | | |
| 27.0101 | Mathematics | 16 | 3 | | | 19 |
| 40.0501 | Chemistry | 6 | | | | 6 |
| 43.0106 | Forensic Science | | | | | |
| Subtotal | | 78 | 5 | | | 83 |
| College of Health Science | | | | | | |
| 51.0706 | Health Information Management | 12 | | | | 12 |
| 51.2399 | Rehabilitation Services | 18 | | | | 18 |
| 51.2310 | Rehabilitation Counseling | | 9 | | | 9 |
| 51.2307 | Prosthetics and Orthotics | | | | | |
| 51.2306 | Occupational Therapy | | 11 | | | 11 |
| 51.2308 | Physical Therapy | | | | 33 | 33 |
| Subtotal | | 30 | 20 | | 33 | 83 |
| College of Visual & Performing Arts | | | | | | |
| 50.0301 | Dance | | | | | |
| 50.0501 | Theatre | 14 | | | | 14 |
| 50.0901 | Music | 5 | | | | 5 |
| 50.0701 | Art | 3 | | | | 3 |
| Subtotal | | 22 | | | | 22 |
| Grand Total | | 550 | 184 | 20 | 43 | 797 |

Note: Alt-A students are included in the Master's

**Number of Bachelor Degrees Conferred by Field of Study
2007-08 through 2011-12 (Summer, Fall, Spring)**

| Field of Study | 2007-08 | 2008-09 | 2009-10 | 2010-11 | 2011-12 |
|------------------------------------|----------------|----------------|----------------|----------------|----------------|
| Accounting | 14 | 12 | 25 | 18 | 23 |
| Art | 1 | 2 | 9 | 6 | 3 |
| Biology | 31 | 47 | 53 | 61 | 48 |
| Chemistry | 2 | 6 | 3 | 3 | 6 |
| Communications | 38 | 38 | 52 | 40 | 43 |
| Computer Information Systems | 23 | 31 | 22 | 33 | 31 |
| Computer Science | 4 | 4 | 12 | 12 | 8 |
| Criminal Justice | 52 | 53 | 55 | 60 | 54 |
| Early Childhood Education | 6 | 13 | 9 | 10 | 9 |
| Elementary Education | 45 | 41 | 41 | 42 | 37 |
| English | 9 | 8 | 8 | 5 | 10 |
| Finance | 11 | 4 | 8 | 7 | 2 |
| Health and Physical Education | 25 | 19 | 31 | 25 | 32 |
| Health Information Management | 8 | 14 | 14 | 19 | 12 |
| History | 3 | 6 | 3 | 1 | 6 |
| Management | 34 | 31 | 24 | 35 | 38 |
| Marketing | 8 | 13 | 15 | 20 | 13 |
| Mathematics | 8 | 10 | 12 | 7 | 16 |
| Music | 6 | 12 | 6 | 4 | 5 |
| Music Education | 2 | 3 | 1 | 5 | 1 |
| Political Science | 9 | 11 | 8 | 10 | 5 |
| Psychology | 31 | 33 | 31 | 47 | 35 |
| Recreation | 21 | 19 | 16 | 18 | 18 |
| Rehabilitation Services | 0 | 0 | 0 | 0 | 18 |
| Secondary Biology | 0 | 0 | 1 | 1 | 3 |
| Secondary English | 0 | 2 | 6 | 3 | 8 |
| Secondary History | 0 | 0 | 0 | 7 | 4 |
| Secondary Mathematics | 0 | 1 | 0 | 1 | 0 |
| Secondary Marketing | 2 | 4 | 2 | 3 | 1 |
| Secondary Chemistry | 0 | 0 | 1 | 0 | 0 |
| Secondary/Collaborative Education | 4 | 7 | 9 | 4 | 7 |
| Secondary Social Science Education | 4 | 1 | 1 | 0 | 0 |
| Social Work | 38 | 30 | 37 | 47 | 40 |
| Sociology | 4 | 2 | 2 | 3 | 0 |
| Theatre | 12 | 16 | 13 | 17 | 14 |
| TOTAL | 455 | 493 | 530 | 574 | 550 |

Number of Master Degrees Conferred by Field of Study 2007-08 through 2011-12 (Summer, Fall, Spring)

| FIELD OF STUDY | 2007-08 | 2008-09 | 2009-10 | 2010-11 | 2011-12 |
|---|------------|------------|------------|------------|------------|
| Accountancy | 6 | 12 | 13 | 18 | 24 |
| Administration | 34 | 25 | 67 | 1 | 3 |
| Biology | 0 | 6 | 0 | 7 | 2 |
| Biology Education | 8 | 13 | 8 | 11 | 6 |
| Early Childhood Education | 21 | 12 | 9 | 6 | 14 |
| Elementary Education | 26 | 28 | 33 | 46 | 22 |
| English Education & Secondary Education | 14 | 10 | 7 | 12 | 13 |
| General Counseling | 15 | 18 | 11 | 16 | 13 |
| Health Education | 1 | 1 | 0 | 4 | 2 |
| History | 0 | 0 | 1 | 2 | 0 |
| History Education | 4 | 4 | 3 | 2 | 0 |
| Instructional Leadership Program | 0 | 0 | 0 | 3 | 13 |
| Language Arts | 0 | | | | |
| Library Education Media | 2 | 8 | 1 | 5 | 7 |
| Mathematics | 0 | 0 | 0 | 1 | 3 |
| Mathematics Education | 8 | 17 | 10 | 15 | 10 |
| Music Education | 6 | 1 | 0 | 4 | 1 |
| Occupational Therapy | 0 | 0 | 2 | 6 | 11 |
| Reading | 0 | | | | |
| Reading Specialist | 0 | 1 | 4 | 1 | 1 |
| Rehabilitation Counseling | 0 | 8 | 3 | 8 | 9 |
| Physical Education | 6 | 6 | 13 | 17 | 6 |
| School Counseling | 13 | 11 | 11 | 9 | 6 |
| Social Science Education | 4 | 6 | 8 | 4 | 5 |
| Special/Collaborative Education | 14 | 24 | 38 | 17 | 13 |
| Total | 182 | 211 | 242 | 215 | 184 |

**Number of Education Specialist Degrees Conferred by Field of Study
2007-08 through 2011-12 (Summer, Fall, Spring)**

| FIELD OF STUDY | 2007-08 | 2008-09 | 2009-10 | 2010-11 | 2011-12 |
|---------------------------|----------------|----------------|----------------|----------------|----------------|
| Administration | 8 | 18 | 13 | 14 | 8 |
| Biology Education | 1 | 0 | 0 | 0 | 0 |
| Elementary Education | 1 | 1 | 4 | 5 | 6 |
| Early Childhood Education | 1 | 0 | 1 | 1 | 1 |
| General Counseling | 0 | 0 | 3 | 3 | 0 |
| Library Education Media | 3 | 0 | 5 | 3 | 2 |
| Mathematics | 0 | 0 | 1 | 1 | 0 |
| School Counseling | 1 | 5 | 5 | 3 | 3 |
| Total | 15 | 24 | 32 | 30 | 20 |

**Number of Doctoral Degrees Conferred by Field of Study
2007-08 through 2011-12 (Summer, Fall, Spring)**

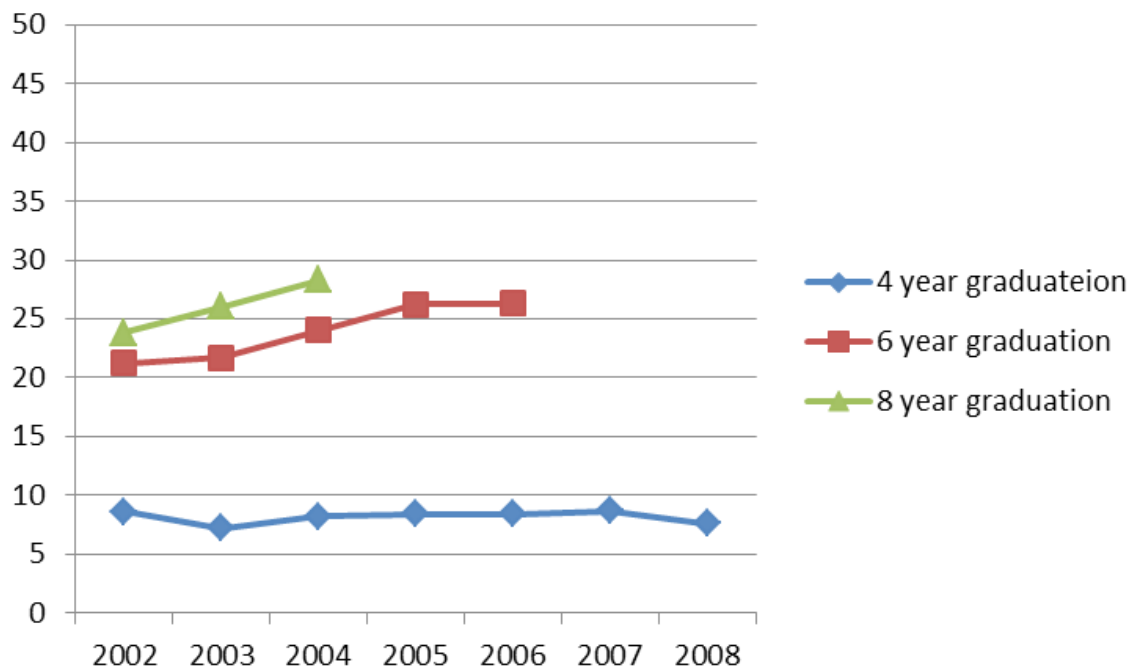
| FIELD OF STUDY | 2007-08 | 2008-09 | 2009-10 | 2010-11 | 2011-12 |
|--|----------------|----------------|----------------|----------------|----------------|
| Educational Leadership, Policy and Law | 9 | 8 | 8 | 9 | 10 |
| Microbiology | 0 | 0 | 0 | 3 | 0 |
| Physical Therapy | 12 | 50 | 46 | 42 | 33 |
| Total | 21 | 58 | 54 | 54 | 43 |

Retention and Graduation Rate

Four-Year, Six-Year and Eight-Year Graduation Rates for First-Time Full-Time Undergraduates, Entering Cohorts 2002-08

| Cohort | 4 Year Graduation Rate | 6 Year Graduation Rate | 8 Year Graduation Rate |
|--------|------------------------|------------------------|------------------------|
| 2002 | 8.6 | 21.2 | 23.8 |
| 2003 | 7.2 | 21.7 | 26.0 |
| 2004 | 8.2 | 24.0 | 28.3 |
| 2005 | 8.4 | 26.2 | |
| 2006 | 8.4 | 26.3 | |
| 2007 | 8.7 | | |
| 2008 | 7.5 | | |

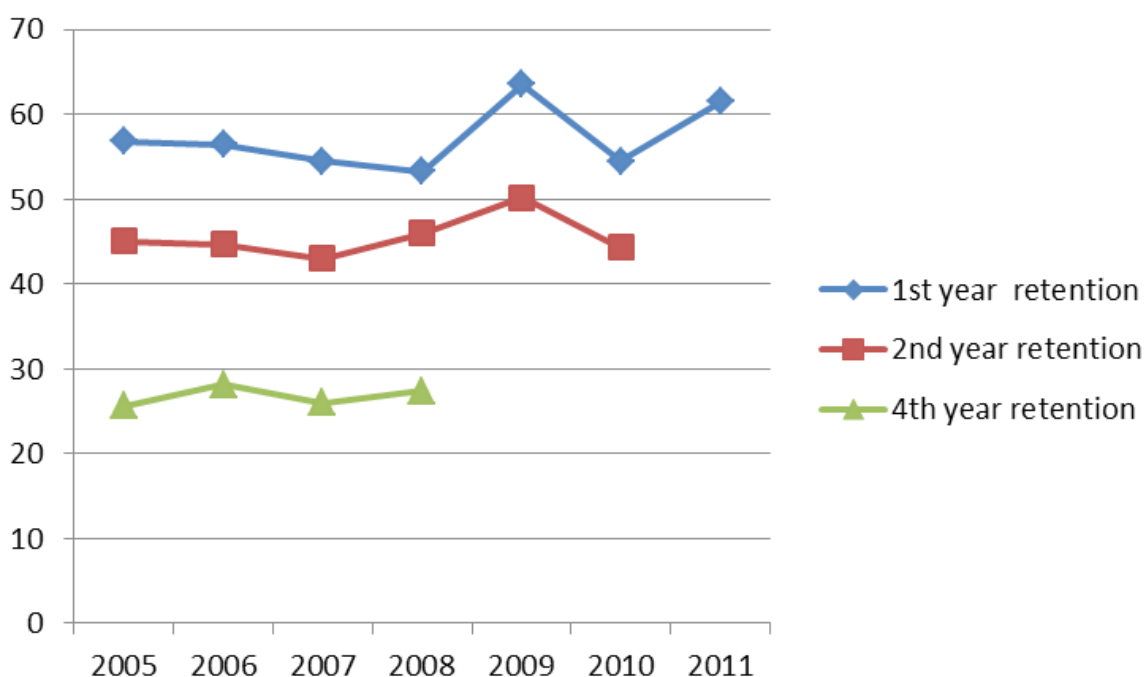
Figure 9. Four-Year, Six-Year and Eight-Year Graduation Rates for First-Time Full-Time Undergraduates, Entering Cohorts 2002-08



First-Year, Second-Year and Fourth-Year Retention Rate for First-Time Full-Time Undergraduates, Entering Cohorts 2005-11

| Cohort | 1st year retention | 2nd year retention | 4th year retention |
|--------|--------------------|--------------------|--------------------|
| 2005 | 55.9 | 45.0 | 25.6 |
| 2006 | 56.4 | 44.7 | 28.0 |
| 2007 | 54.5 | 43.0 | 26.0 |
| 2008 | 53.8 | 46.1 | 27.1 |
| 2009 | 63.5 | 50.2 | |
| 2010 | 54.5 | 44.3 | |
| 2011 | 61.5 | | |

Figure 10. First-Year, Second-Year and Fourth-Year Retention Rate for First-Time Full-Time Undergraduates, Entering Cohorts 2005-011



Employee Information

University Employees by Full-Time/Part-Time Status, Ethnicity and Gender, Oct. 31, 2012

| Ethnicity | Instructional Staff | | | Non-instructional staff | | |
|---|---------------------|------------|------------|-------------------------|------------|------------|
| | Full-time | Part-time | Total | Full-time | Part-time | Total |
| Hispanic/ Latino | 3 | 2 | 5 | 1 | 0 | 1 |
| American Indian or Alaska Native | 3 | | 3 | 1 | 0 | 1 |
| Asian | 29 | 1 | 39 | 11 | 0 | 11 |
| Black | 159 | 115 | 320 | 608 | 96 | 704 |
| Native Hawaiian or Other Pacific Islander | 1 | | 4 | 0 | 0 | 0 |
| White | 76 | 31 | 130 | 40 | 2 | 42 |
| Two or more races | | | | 1 | 0 | 1 |
| Unknown | 5 | 4 | 10 | 1 | 0 | 1 |
| Total | 276 | 153 | 509 | 663 | 100 | 763 |
| Gender | | | | | | |
| Male | 126 | 73 | 199 | 280 | 34 | 314 |
| Female | 150 | 80 | 230 | 383 | 66 | 449 |
| Total | 276 | 153 | 429 | 663 | 100 | 763 |

**University Employees by Occupational Classification,
Full-Time/Part-Time Status and Gender, Oct. 31, 2012**

| Category | Full-time | | | Part-time | | |
|---|------------------|---------------|--------------|------------------|---------------|--------------|
| | Male | Female | Total | Male | Female | Total |
| Instructional Staff | 126 | 150 | 276 | 73 | 80 | 153 |
| Research | | | | | | |
| Library and Instructional Support Occupation | 19 | 29 | 48 | 1 | 15 | 16 |
| Management | 53 | 45 | 98 | 3 | 3 | 6 |
| Business and Financial Operations | 5 | 39 | 44 | | | 0 |
| computer, Engineering, and Science | 16 | 9 | 25 | | | |
| Community Service, Legal, Arts, and Media | 51 | 23 | 74 | 9 | 5 | 14 |
| Healthcare Practitioners and Technical Occupations | 0 | 1 | 1 | 0 | 0 | 0 |
| Service Occupation | 90 | 75 | 165 | 4 | 9 | 13 |
| Sales and Related Occupations | 0 | 0 | 0 | | | |
| Office and Administrative Support | 22 | 158 | 180 | 11 | 31 | 42 |
| Natural Resources, Construction, and Maintenance | 19 | 2 | 21 | 3 | 1 | 4 |
| Production, Transportation, and Material Moving Occupations | 5 | 2 | 7 | 3 | 2 | 5 |
| Total | 406 | 533 | 939 | 107 | 146 | 253 |

**Tenure Status of Full-time Instructional Staff by Academic Rank and Gender,
Oct. 31, 2012**

| Academic Rank & Gender | Tenure Status | | | | | | Total | |
|------------------------|---------------|------|-----------------|------|---------------------|------|-------|------|
| | Tenured | | On Tenure Track | | Not On Tenure Track | | | |
| | No. | % | No. | % | No. | % | No. | % |
| Professor | | | | | | | | |
| Male | 38 | 61% | 1 | 0.5% | | | 39 | 61% |
| Female | 24 | 39% | 1 | 0.5% | | | 25 | 39% |
| Total | 62 | 100% | 2 | 100% | | | 64 | 100% |
| Associate Professor | | | | | | | | |
| Male | 13 | 32% | 12 | 63% | 4 | 80% | 29 | 45% |
| Female | 28 | 68% | 7 | 37% | 1 | 20% | 36 | 55% |
| Total | 41 | 100% | 19 | 100% | 5 | 100% | 65 | 100% |
| Assistant Professor | | | | | | | | |
| Male | 1 | 14% | 28 | 48% | 11 | 46% | 40 | 45% |
| Female | 6 | 86% | 30 | 52% | 13 | 54% | 49 | 55% |
| Total | 7 | 100% | 58 | 100% | 24 | 100% | 89 | 100% |
| Instructor | | | | | | | | |
| Male | 0 | | 0 | | 18 | 33% | 18 | 31% |
| Female | 2 | 100% | 1 | 100% | 37 | 67% | 40 | 69% |
| Total | 2 | 100% | 1 | 100% | 55 | 100% | 58 | 100% |
| Total | | | | | | | | |
| Male | 52 | 46% | 41 | 51% | 33 | 39% | 126 | 46% |
| Female | 60 | 54% | 39 | 49% | 51 | 61% | 150 | 54% |
| Total | 112 | 100% | 80 | 100% | 84 | 100% | 276 | 100% |

Instructional Staff by Full-time/Part-time, College and Gender, Oct. 31, 2012

| College | Full-Time | | | Part-Time | | | Total |
|---------------------------------------|------------|------------|------------|-----------|-----------|------------|------------|
| | Male | Female | Total | Male | Female | Total | |
| College of Business Administration | 16 | 10 | 26 | 4 | 3 | 7 | 33 |
| College of Education | 20 | 35 | 55 | 24 | 39 | 63 | 118 |
| College of Health Science | 7 | 16 | 23 | 3 | 3 | 6 | 29 |
| College of Liberal Arts & Social Sci. | 19 | 19 | 38 | 13 | 10 | 23 | 61 |
| College of Sci. Math. & Tech. | 20 | 15 | 35 | 11 | 1 | 12 | 47 |
| College of Visual & Performing Arts | 17 | 13 | 30 | 7 | 4 | 11 | 41 |
| University College | 26 | 42 | 68 | 11 | 20 | 31 | 99 |
| Library | 1 | | 1 | | | | 1 |
| Total | 126 | 150 | 276 | 73 | 80 | 153 | 429 |



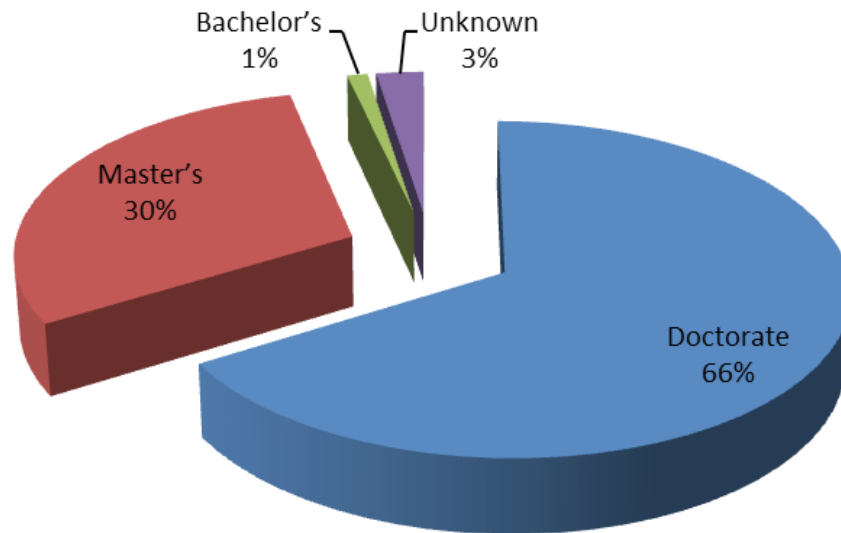
Instructional Staff by College and Ethnicity, Oct. 31, 2012

| College | Black | White | Asian | Ameri. Indian | Hisp. | Native Hawaiian | Unkown | Total |
|---------------------------------------|------------|-----------|-----------|------------------|----------|--------------------|----------|------------|
| College of Business Administration | 10 | 5 | 10 | 1 | 0 | 0 | 0 | 26 |
| College of Education | 39 | 13 | 2 | 0 | 0 | | 1 | 55 |
| College of Health Science | 11 | 11 | 1 | 0 | 0 | 0 | 0 | 23 |
| College of Liberal Arts & Social Sci. | 27 | 10 | 0 | 1 | 0 | 0 | 0 | 38 |
| College of Sci. Math. & Tech. | 16 | 7 | 8 | 0 | 0 | 0 | 4 | 35 |
| College of Visual & Performing Arts | 17 | 10 | 0 | 0 | 3 | 0 | 0 | 30 |
| University College | 39 | 20 | 7 | 1 | 0 | 1 | 0 | 68 |
| Library | 0 | 0 | 1 | 0 | 0 | 0 | 0 | 1 |
| Total | 159 | 76 | 29 | 3 | 3 | 1 | 5 | 276 |

Highest Degree attained by Full Time Faculty by Academic Rank

| College | Doctorate | Master's | Bachelor's | Unknown | Total |
|---------------------|--------------|--------------|-------------|-------------|-------------|
| Professor | 62 | 2 | | | 64 |
| Associate Professor | 58 | 6 | | 1 | 65 |
| Assistant | 60 | 25 | | 4 | 89 |
| Instructors | 3 | 50 | 3 | 2 | 58 |
| Total | 183 | 83 | 3 | 7 | 276 |
| Percentage | 66.3% | 30.1% | 1.1% | 2.5% | 100% |

Figure 12. Highest Degrees Earned by Full-Time Faculty, Oct. 31, 2012



University Employees by Full-Time/Part-Time Status and Gender, 2008-12

| Status | 2008 | | 2009 | | 2010 | | 2011 | | 2012 | |
|------------------|--------------|-------------|--------------|-------------|--------------|-------------|--------------|-------------|-------------|-------------|
| | No. | % | No. | % | No. | % | No. | % | No. | % |
| Full-time | 872 | 77% | 871 | 77% | 896 | 77% | 897 | 83% | 939 | 79% |
| Part-time | 259 | 23% | 259 | 23% | 264 | 23% | 185 | 17% | 253 | 21% |
| Total | 1,131 | 100% | 1,130 | 100% | 1,160 | 100% | 1,082 | 100% | 1192 | 100% |
| Gender | | | | | | | | | | |
| Male | 476 | 42% | 472 | 42% | 487 | 44% | 480 | 44% | 513 | 43% |
| Female | 655 | 58% | 658 | 58% | 673 | 56% | 602 | 56% | 679 | 57% |
| Total | 1,131 | 100% | 1,130 | 100% | 1,160 | 100% | 1,082 | 100% | 1192 | 100% |

Note: *In 2012, individuals who held both full-time and part-time positions are counted under both categories.

Physical Facilities

Building Inventory, Fall 2012

| Building Number | Building Name | Construction Year | Net Assignable Square Footage | Gross Square Footage |
|-----------------|--------------------------------|-------------------|-------------------------------|----------------------|
| 1 | John W. Abercrombie Hall | 1947 | 32,934 | 38,580 |
| 3 | Fred Shuttlesworth Dining Hall | 2007 | 27,300 | 39,000 |
| 4 | John W. Beverly Hall | 1939 | 16,511 | 24,483 |
| 5 | Bibb Graves Hall | 1928 | 32,934 | 38,580 |
| 6 | William Hooper Councill Hall | 1956 | 41,371 | 62,872 |
| 8 | University Center Annex | 1975 | 2,064 | 3,952 |
| 9 | Faculty Home – 1040 | 1939 | 2,135 | 2,580 |
| 10 | Faculty Home – 1030 | 1936 | 1,458 | 1,820 |
| 11 | Faculty Home – 1004 | 1956 | 1,237 | 1,620 |
| 14 | George H. Lockhart Gymnasium | 1939 | 31,913 | 48,956 |
| 19 | Kilby Hall | 1920 | 4,065 | 8,256 |
| 20 | Maintenance Shop | 1939 | 5,431 | 5,431 |
| 22 | William Burns Paterson Hall | 1930 | 26,494 | 46,886 |
| 23 | Fountain Manor | 1922 | 4,632 | 5,150 |
| 26 | George W. Trenholm Hall | 1947 | 19,671 | 33,818 |
| 32 | Faculty Home – 1050 | 1936 | 1,926 | 2,580 |
| 33 | Faculty Home – 1020 | 1956 | 1,829 | 2,961 |
| 34 | Faculty Home – 1006 | 1956 | 1,540 | 1,716 |

Building Inventory, Fall 2012 (continued)

| Building Number | Building Name | Construction Year | Net Assignable Square Footage | Gross Square Footage |
|-----------------|---------------------------------------|-------------------|-------------------------------|----------------------|
| 35 | Faculty Home – 1010 | 1947 | 1,285 | 1,598 |
| 55 | H. Councill Trenholm Hall | 1968 | 42,388 | 57,352 |
| 56 | Edward G. McGehee Hall | 1968 | 27,778 | 41,715 |
| 57 | Willease R. Simpson Hall | 1966 | 27,952 | 42,476 |
| 58 | Cynthia D. Alexander Apartments | 1966 | 7,572 | 7,816 |
| 59 | Cynthia D. Alexander Apartments | 1966 | 4,773 | 4,956 |
| 60 | George N. Card Hall | 1963 | 32,704 | 35,577 |
| 61 | William H. Benson Hall | 1970 | 41,946 | 67,001 |
| 62 | University House | 1970 | 4,799 | 5,184 |
| 63 | Zelia Stephens Early Childhood Center | 1971 | 9,832 | 14,145 |
| 64 | Bessie W. Benson Hall | 1972 | 32,964 | 41,205 |
| 66 | Tullibody Hall | 1974 | 23,219 | 41,000 |
| 68 | Levi Watkins Learning Center | 1978 | 74,690 | 107,166 |
| 69 | Business Administration | 1978 | 19,986 | 28,534 |
| 70 | Peyton Finley | 1983 | 2,157 | 3,872 |
| 74 | Willetta McGinty Apartments | 1983 | 3,120 | 3,872 |
| 78 | Tullibody Fine Arts Center | 1984 | 25,782 | 52,176 |
| 79 | Martin L. King, Jr. Hall | 1990 | 36,481 | 64,513 |
| 80 | Bessie S. Estell Hall | 1990 | 36,481 | 64,513 |

Building Inventory, Fall 2012 (continued)

| Building Number | Building Name | Construction Year | Net Assignable Square Footage | Gross Square Footage |
|-----------------|-------------------------------------|-------------------|-------------------------------|----------------------|
| 81 | ASU Acadome | 1992 | 111,438 | 220,512 |
| 82 | Charles Johnson Dunn Tower | 1994 | 67,994 | 114,419 |
| 83 | Olean Black Underwood Tennis Center | 1994 | 1,777 | 2,700 |
| 85 | Campus Police ID | 1939 | 809 | 809 |
| 86 | Allied Health #1 | 1955 | 15,747 | 17,616 |
| 87 | Allied Health #2 | 1955 | 5,974 | 8,368 |
| 88 | Storage Building | 1931 | 2,965 | 3,456 |
| 90 | Physical Plant | 1971 | 15,250 | 18,324 |
| 91 | Bus Wash Rack | 2000 | 2,574 | 2,700 |
| 92 | Girard Apartment A | 1969 | 5,998 | 6,664 |
| 93 | Girard Apartment B | 1969 | 3,978 | 4,420 |
| 94 | Girard Apartment C | 1969 | 5,211 | 5,780 |
| 95 | Girard Apartment D | 1969 | 3,366 | 3,740 |
| 96 | Norris House | 1930 | 1,683 | 1,870 |
| 97 | Nat King Cole | 1912 | 810 | 900 |
| 98 | Civil Rights Center | 1990 | 2,453 | 3,628 |
| 99 | Football Facility | 1996 | 9,182 | 11,520 |
| 100 | John Buskey Health Center | 2001 | 45,077 | 77,980 |
| 101 | Kittell Hall | 1962 | 7,105 | 10,442 |
| 102 | German Hall | 1935 | 2,165 | 2,496 |
| 103 | Van Vorst Hall – North | 1962 | 2,625 | 3,983 |
| 104 | Van Vorst Hall | 1924 | 6,737 | 10,107 |
| 105 | Van Vorst Hall-South | 1963 | 2,063 | 2,907 |
| 106 | Dolley Hall | 1930 | 5,944 | 9,410 |
| 107 | Craft Shop | 1958 | 452 | 499 |
| 108 | Callie Lee Center | 1976 | 2,867 | 3,000 |
| 109 | Maintenance Garage | 1970 | 1,033 | 1,148 |

Building Inventory, Fall 2012 (continued)

| Building Number | Building Name | Construction Year | Net Assignable Square Footage | Gross Square Footage |
|-----------------|-------------------------|-------------------|-------------------------------|----------------------|
| 110 | Meeng's Hall | 1975 | 9,508 | 12,800 |
| 111 | Branche Hall | 1960 | 9,051 | 13,121 |
| 112 | Gymnasium | 1968 | 12,847 | 16,903 |
| 113 | South Duplex | 1970 | 2,268 | 2,520 |
| 114 | President's Home | 1965 | 1,517 | 2,051 |
| 115 | Chapel | 1948 | 5,253 | 6,730 |
| 116 | Day Care Center | 1930 | 2,185 | 2,538 |
| 117 | Pole Barn | 1978 | 3,579 | 3,652 |
| 118 | North Duplex | 1993 | 2,223 | 2,470 |
| 119 | Open Shed | 1960 | 1,329 | 1,350 |
| 120 | East Storage Building | 1965 | 1,243 | 1,440 |
| 121 | Alumni House | 1955 | 2,290 | 2,750 |
| 122 | Robert C. Hatch | 2007 | 31,913 | 55,951 |
| 123 | Groundkeeper Shop | 1990 | 1,163 | 1,232 |
| 124 | Dwight's | 1990 | 1,178 | 3,800 |
| 125 | Life Sciences | 2008 | 47,989 | 85,000 |
| 126 | Ralph D. Abernathy Hall | 2009 | 124,419 | 140,623 |
| 127 | Inventory Control | 1978 | 3,154 | 3,270 |
| 128 | ASU Commerce | 1979 | 64,138 | 64,138 |
| 129 | ASU Farmers Market | 2011 | 36,062 | 36,062 |
| 130 | Athletic Complex | 1975 | 14,720 | 14,720 |
| 131 | Dorm A | 2011 | 78,740 | 78,740 |
| 132 | Dorm B | 2011 | 78,740 | 78,740 |

Building Inventory, Fall 2012 (continued)

| Building Number | Building Name | Construction Year | Net Assignable Square Footage | Gross Square Footage |
|-----------------|-----------------------------------|-------------------|-------------------------------|----------------------|
| 133 | Public Safety | 1972 | 5,006 | 5,006 |
| 134 | John Garrick Hardy Student Center | 2012 | 61,440 | 76,800 |
| 135 | The New ASU Stadium | 2012 | 249,593 | 343,719 |
| Total | | | 1,855,106 | 2,657,134 |

Space Data, Fall 2007-12

| Space Data Report | Educational and General Gross Square Footage | Total Gross Square Footage |
|-------------------|--|----------------------------|
| 2007 | 1,002,307 | 1,757,597 |
| 2008 | 1,058,258 | 1,736,935 |
| 2009 | 1,130,526 | 1,767,338 |
| 2010 | 1,017,929 | 1,728,713 |
| 2011 | 1,374,124 | 2,399,870 |
| 2012 | 1,388,773 | 2,680,366 |

Note: Space in service as of June 30, 2012.

Source of Revenue Fiscal Year 2011-12

| Revenue Source | Reported values | Percent of total core revenues |
|---|---------------------|--------------------------------|
| Student tuition and fees | \$41,248,372 | 43% |
| Federal grants and contracts | \$31,720,056 | 33% |
| State grants and contracts | \$6,082,021 | 6% |
| Non-governmental grants and contracts | \$2,063,147 | 2% |
| Sales and services of auxiliary enterprises | \$11,402,064 | 12% |
| Intercollegiate athletics | \$1,347,192 | 1% |
| Other operating revenue | \$2,949,850 | 3% |
| Total operating revenues | \$96,812,702 | 100% |

Expenditures by Function Fiscal year 2011-12

| Expense function | Reported Values | Percent of Total Expenses |
|--------------------------------------|----------------------|---------------------------|
| Instruction | \$33,710,163 | 24% |
| Research and development | \$2,001,039 | 1% |
| Public service | \$9,633,148 | 7% |
| Academic support | \$8,115,645 | 6% |
| Student services | \$12,378,585 | 9% |
| Operational and maintenance of plant | \$13,161,085 | 9% |
| Institutional support | \$26,899,211 | 19% |
| Depreciation | \$8,833,326 | 6% |
| Student aid | \$21,503,719 | 15% |
| Auxiliary enterprises: | | |
| Residential Life | \$6,361,348 | 4% |
| Other auxiliary expenses | \$553,405 | 0% |
| Total operating expenses | \$143,150,674 | 100% |

as Compared to State Median, 2007-12

| YEAR | Undergraduate | | | | Graduate | | | |
|------------------------------|---------------|--------------|----------------|--------------|------------|--------------|----------------|--------------|
| | Resident | | Non – Resident | | Resident | | Non - Resident | |
| | ASU | STATE MEDIAN | ASU | STATE MEDIAN | ASU | STATE MEDIAN | ASU | STATE MEDIAN |
| 2007 | \$4,508 | \$5,040 | \$8,516 | \$9,680 | \$5,108 | \$5,192 | \$9,716 | \$10,800 |
| 2008 | \$5,460 | \$5,594 | \$10,068 | \$11,150 | \$6,180 | \$5,768 | \$11,508 | \$11,508 |
| 2009 | \$6,468 | \$6,185 | \$12,084 | \$12,282 | \$7,524 | \$6,334 | \$14,196 | \$13,152 |
| 2010 | \$7,164 | \$7,136 | \$13,476 | \$13,700 | \$8,340 | \$7,198 | \$15,828 | \$15,828 |
| 2011 | \$8,082 | \$7,865 | \$14,394 | \$15,170 | \$9,108 | \$8,016 | \$16,596 | \$17,186 |
| 2012 | \$7,932 | \$8,275 | \$14,244 | \$15,950 | \$9,108 | \$8,430 | \$16,596 | \$17,184 |
| % Change over 2011-12 | -1.9 | 5.2 | -1.0 | 5.1 | 0.0 | 5.8 | 0.0 | 3.5 |

Source: ACHE Undergraduate/Graduate Resident and Non-resident Tuition Plus Required Fees Combined
public Four-Year institutions 2001-02 thru 2012-13

Glossary

| | |
|---|--|
| Academic Rank | Categorization of faculty positions, which include tenure/tenure-track and non-tenure-track positions. Tenured and tenure-track positions are assistant professor, associate professor and professor; non-tenure-track positions are instructor. |
| ACT | Previously known as the American College Testing program, this test measures educational development and readiness to pursue college-level coursework in English, mathematics, natural science and social studies. Student performance does not reflect innate ability and is influenced by a student's educational preparedness. |
| Admitted Student | Applicant who is offered admission to a degree-granting program at Alabama State University. |
| American Indian or Alaska Native | A person having origins in any of the original peoples of North and South America (including Central America) who maintains cultural identification through tribal affiliation or community recognition. |
| Applicant | An individual who has fulfilled the institution's requirements to be considered for admission and who has been notified of one of the following actions: admission, non admission, placement on waiting list or application withdrawn. |
| Asian Or Pacific Islander | A person having origins in any of the original peoples of the Far East, Southeast Asia, the Indian Subcontinent, or Pacific Islands. This includes people from China, Japan, Korea, the Philippine Islands, American Samoa, India and Vietnam. |
| Bachelor's Degree | An award (baccalaureate or equivalent degree, as determined by the Secretary of the U.S. Department of Education) that normally requires at least four years, but not more than five years, of full-time equivalent college-level work. |
| Black or African-American | A person having origins in any of the black racial groups of Africa. |
| Buildings | Capital assets built or acquired for occupancy and use by the entity. These are structures such as classrooms, research facilities, administrative offices and storage. |
| Classification | Degree-seeking students are classified based on satisfactory performance on all required examinations and successful completion of credit hours as follows: freshman (less than 32 semester hours), sophomore (at least 32 but less than 63 semester hours), junior (at least 63 but less than 93 semester hours) and senior (at least 93 semester hours). |
| Classification of Instructional Programs (CIP) | A standard numerical and terminological classification system for secondary and postsecondary instructional programs. CIP codes, a six-digit code (in the form xx.xxxx), are used by universities nationally to report various instructional program data to the U. S. Department of Education and other government and higher education organizations. |
| Clerical and Secretarial | A primary function or occupational activity category used to classify persons whose assignments typically are associated with clerical activities or are specifically of a secretarial nature. |
| Cohort | A specific group of students established for tracking purposes. |

| | |
|---|---|
| Degree | An award conferred by a college, university or other postsecondary education institution as official recognition for the successful completion of a program of studies. |
| Doctor's Degree | Highest award a student can earn for graduate study. The doctor's degree classification includes such degrees as Doctor of Education, Doctor of Juridical Science, Doctor of Public Health and the Doctor of Philosophy degree in any field such as agronomy, food technology, education, engineering, public administration, ophthalmology, or radiology. |
| Enrollment | The number of persons who have accurately completed the registration process and who have paid the appropriate fees for coursework. |
| Executive, Administrative and Managerial | Persons whose assignments require management of the institution, or a customarily recognized department or subdivision thereof. Assignments require the performance of work directly related to management policies or general business operations of the institution, department or subdivision. Assignments in this category customarily and regularly require the incumbent to exercise discretion and independent judgment. |
| Faculty | Persons whose initial assignments are made for the purpose of conducting instruction, research or public service as a principal activity (or activities). They may hold academic rank titles of professor, associate professor, assistant professor, instructor, lecturer or the equivalent of any of those academic ranks. Faculty may also include the chancellor/president, provost, vice provosts, deans, directors or the equivalent, as well as associate deans, assistant deans and executive officers of academic departments (chairpersons, heads or the equivalent) if their principal activity is instruction combined with research and/or public service. The designation as "faculty" is separate from the activities to which they may be currently assigned. For example, a newly appointed president of an institution may also be appointed as a faculty member. Graduate, instruction and research assistants are not included in this category. |
| Federal Government Grants and Contracts (Revenues) | Revenues from federal governmental agencies that are for training programs, research or public service activities for which expenditures are reimbursable under the terms of a government grant or contract. (Includes Pell Grants.) |
| First-Time Freshman | A student attending any institution for the first time at the undergraduate level. Includes students enrolled in the fall term who attended college for the first time in the prior summer term. |
| Freshman | Classification level designation for first-year student in undergraduate programs. |
| Full-Time Equivalent (F.T.E.) Student | The full-time equivalent (FTE) of students is a single value providing a meaningful combination of full time and part time students. |
| Full-Time Student | Undergraduate: a student enrolled for 12 or more semester credit hours. Graduate: a student enrolled for 9 or more semester credit hours. |
| Graduate Student | A student who holds a bachelor's or equivalent and is taking courses at the post-baccalaureate level. |

Glossary (continued)

| | |
|--|--|
| Graduation Rate | Represents the percent of first-time, full-time freshmen enrolled in the University in the fall terms of an academic year that subsequently earn a degree at the University within four, six or eight years. |
| Grants and Contracts (Revenues) | Revenues from governmental agencies and nongovernmental parties that are for specific research projects, other types of programs or for general institutional operations (if not government appropriations). |
| Hispanic | A person of Mexican, Puerto Rican, Cuban, Central or South American, or other Spanish culture or origin, regardless of race. |
| Junior | Classification-level designation for third-year student in undergraduate programs. |
| In-State Student | A student who is a legal resident of the state in which he/she attends school. |
| In-State Tuition | The tuition charged by institutions to those students who meet the state's or institution's residency requirements. |
| Level (of Student) | Student's level of progress toward a degree. Freshmen and sophomore students are categorized as lower level; junior and senior students are categorized as upper level; graduate students are categorized as graduate level. |
| Master's Degree | An award that requires the successful completion of a program of study of generally one or two full-time equivalent academic years of work beyond the bachelor's degree. |
| Native Hawaiian or Other Pacific Islander | A person having origins in any of the original peoples of Hawaii, Guam, Samoa or other Pacific Islands. |
| New Graduate | Student who has not previously enrolled for work creditable toward an advanced degree at any university and who is enrolled for work creditable toward such a degree. |
| Non-Degree-Seeking Student | A student enrolled in courses for credit who is not recognized by the institution as seeking a degree or formal award. |
| Nonresident Alien | A person who is not a citizen or national of the United States and who is in this country on a visa or temporary basis and does not have the right to remain indefinitely. |
| Non Instructional Employee | All University employees who are not classified as faculty. |
| University Housing | Any residence halls owned or controlled by an institution within the same reasonably contiguous geographic area and used by the institution in direct support of, or in a manner related to, the institution's educational purposes. |
| Out-of-State Student | A student who is not a legal resident of the state in which he/she attends school. |
| Out-of-State Tuition | The tuition charged by institutions to those students who do not meet the institution's or state's residency requirements. |

| | |
|------------------------------------|--|
| Part-Time Staff (Employees) | The type of appointment at the snapshot date determines whether an employee is full time or part time. The employee's term of contract is not considered in making the determination of full or part time. |
| Part-Time Student | Undergraduate |
| Ethnicity | Category used to describe groups to which individuals belong, identify with, or belong in the eyes of the community. The categories do not denote scientific definitions of anthropological origins. A person may be counted in only one group. |
| Retention Rate | A measure of the rate at which students persist in their educational program at an institution, expressed as a percentage. For four-year institutions, this is the percentage of first-time bachelors (or equivalent) degree-seeking undergraduates from the previous fall who are again enrolled in the current fall. |
| Revenues | The inflow of resources or other enhancement of net assets (or fund balances) of an institution or settlements of its liabilities (or a combination of both) from delivering or producing goods, rendering services, or other activities that constitute the institution's ongoing major or central operations. Includes revenues from fees and charges, appropriations, auxiliary enterprises and contributions and other nonexchange transactions. |
| SAT | Previously known as the Scholastic Aptitude Test, this is an examination administered by the Educational Testing Service (ETS) which is used to predict the facility with which an individual will progress in learning college-level academic subjects. |
| Senior | Classification level designation for fourth-year or later student in undergraduate programs. |
| Service/Maintenance | Primary function or occupational activity category used to classify persons whose assignments require limited degrees of previously acquired skills and knowledge and in which workers perform duties that result in or contribute to the comfort, convenience and hygiene of personnel and the student body or that contribute to the upkeep of the institutional property. |
| Skilled Crafts | Primary function or occupational activity category used to classify persons whose assignments typically require special manual skills and a thorough and comprehensive knowledge of the processes involved in the work, acquired through on-the-job training and experience or through apprenticeship or other formal training programs. |
| Sophomore | Classification level designation for second-year student in undergraduate programs. |
| State Of Origin | The state of residence at the time of application to the University. |

Glossary (continued)

| | |
|---------------------------------------|---|
| Technical And Paraprofessional | Primary function or occupational activity category used to classify persons whose assignments require specialized knowledge or skills which may be acquired through experience, apprenticeship, on-the-job-training, or academic work in occupationally specific programs that result in a 2-year degree or other certificate or diploma. Includes persons who perform some of the duties of a professional in a supportive role, which usually requires less formal training and/or experience than normally required for professional status. |
| Tenure | Status of a personnel position with respect to permanence of the position. |
| Tenure Track | Personnel positions that lead to consideration for tenure. |
| Transfer Applicant | An individual who has fulfilled the institution's requirements to be considered for admission (including payment or waiving of the application fee, if any) and who has previously attended another college or university and earned college-level credit. |
| Transfer Student | A student entering the institution for the first time but known to have previously attended a postsecondary institution at the same level (e.g., undergraduate). |
| Tuition | Amount of money charged to students for instructional services. Tuition may be charged per term, per course or per credit. |
| Tuition And Fees (Revenues) | Revenues from all tuition and fees assessed against students (net of refunds and discounts and allowances) for educational purposes. |
| Undergraduate | A student enrolled in a four- or five-year bachelor's degree program, an associate degree program, or a vocational or technical program below the baccalaureate. |
| Unduplicated Head Count | The sum of students enrolled for credit with each student counted only once during the reporting period, regardless of when the student enrolled. |
| White, Non-Hispanic | A person having origins in any of the original peoples of Europe, North Africa, or the Middle East (except those of Hispanic origin). |

Source: Unless otherwise noted, the source of these definitions is the IPEDS glossary: <http://nces.ed.gov/ipeds/>



2012 Alumni Information

| 2012 EXECUTIVE OFFICERS | |
|--------------------------------|------------------------|
| President | Beatrice “Bea” Forniss |
| Vice President | Vanessa Dickens |
| Secretary | William Vann, III |
| Secretary/Treasurer | Marlon Meeks |
| REGIONAL DIRECTORS | |
| Shannon Lawrence | Farwest |
| Joycelyn Travis | Midwest |
| Rita Knight | Northeast |
| La Tanya Dunham | Southeast |
| MEMBERS-AT-LARGE | |
| Aquilla Scott | Farwest |
| Abraham T. Smith | Midwest |
| James S. McFadden | Northeast |
| Daisy Baxter-Glass | Southeast |

Alumni Relations Director

Cromwell Handy
P.O. Box 271
Montgomery, AL 36101-0271
chandy@alasu.edu
334-229-4280

NAA President

Bea Forniss
ASU National Alumni Association
P.O. Box 6078
Montgomery, AL 36106
naapresident@alasu.edu
Home 334-288-8945
Office 334-242-5464



ASU

**ALABAMA STATE
UNIVERSITY**

Office of Institutional Research

www.alasu.edu

P.O. Box 271 • Montgomery, AL 36101

334-229-4100